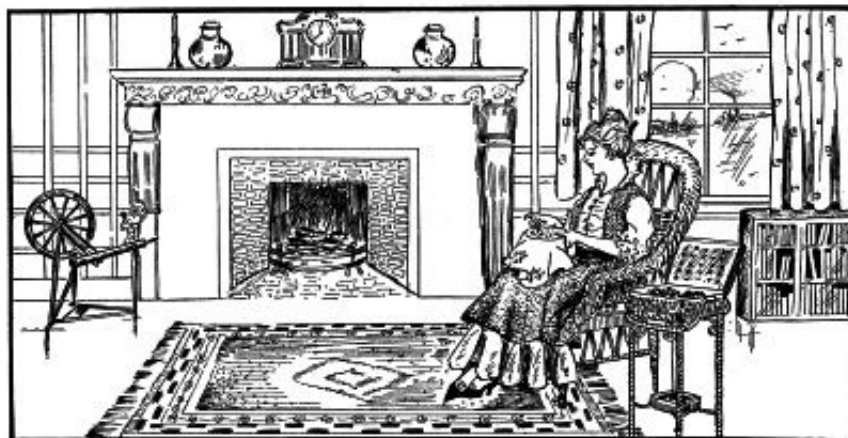


**Tatting Pages only courtesy of Gail Baumgardner
scanned by Georgia Seitz**

The DOROTHY BRADFORD

FOR
INEXPENSIVE
GIFTS
AND
HOW TO
MAKE
THEM.



IN
CROCHET,
TATTING,
EMBROIDERY
AND
LACE
WORK.

SERIES - 14



THE “DOROTHY BRADFORD”

SERIES No. 14

*For Inexpensive Gifts and How to Make Them
in Crochet, Tatting, Embroidery
and Lace-Work*



REG. U. S. PAT. OFFICE

Copyright, 1915,
by
ALFRED MAYER-WEISMANN & CO.
BOSTON, MASS.

PUBLISHED BY
ALFRED MAYER-WEISMANN & CO.
67 CHAUNCEY STREET
BOSTON, MASS.

PRICE, 25 CENTS

Tatted Insertions with Edgings to Match.

By using material Crochet Cotton 40, you will obtain your work in about the size of the illustrations; in some cases it will be advisable to connect the picots of border rows with a crocheted row of chain stitches over which to sew on to the material. Another very simple edging is shown in Fig. 52, the baby's bonnet.

FIG. 20. INSERTION. (Material as given above.)

FIRST ROW: *1 sh.: form a r. of 6 d.s. - 1 p. - 6 d.s. - close r.
2 sh.: turn - bow of 6 d.s. - 1 p. - 6 d.s.
1 sh.: turn - form a r. of 6 d.s. - join to p. of previous r. - 6 d.s. - close r. - repeat from* until desired length is reached.

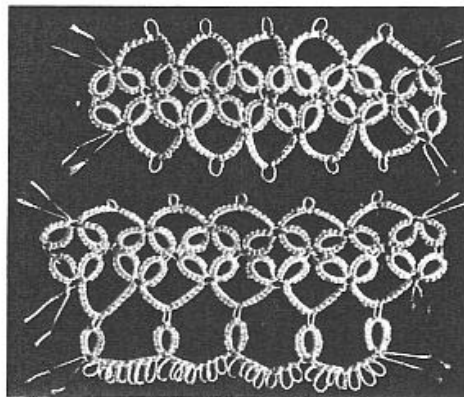


Fig. 20.

FIG. 20. EDGING. (Material as given above.)

FIRST TWO ROWS exactly like described for Insertion.
THIRD ROW: *1 sh.: form a r. of 6 d.s. - join to p. of bow of SECOND ROW - 6 d.s. - close r. - turn.
2 sh.: bow of 1 d.s. - 7 p., separated by 1 d.s. each - 1 d.s. - turn - repeat from*.

FIG. 21. INSERTION. (Material as given above.)

FIRST ROW: 1 sh.: form a r. of 4 d.s. - 7 p., separated by $1\frac{1}{2}$ d.s. - 4 d.s. - close r.
*2 sh.: turn - bow of 7 d.s. - 1 p. - 7 d.s.
1 sh.: turn - form a r. of 4 d.s. - join to last p. of previous r. - $1\frac{1}{2}$ d.s. - 6 p., separated by $1\frac{1}{2}$ d.s. - 4 d.s. - close r. - repeat from* until required length is reached.
SECOND ROW: 1 sh.: form a r. of 4 d.s. - 7 p., separated by $1\frac{1}{2}$ d.s. - 4 d.s. - close r.
2 sh.: turn - bow of 7 d.s. - join to p. of bow of FIRST ROW - 7 d.s. - and continue like FIRST ROW.

Page Five

Dorothy Bradford Series #14 pub 1915

FIG. 21. EDGING. (Material as given above.)

FIRST ROW: 1 sh.: form a r. of 30 d.s. and 12 p. ($2\frac{1}{2}$ d.s. and 1 p. alternating) - break off thread and fasten.

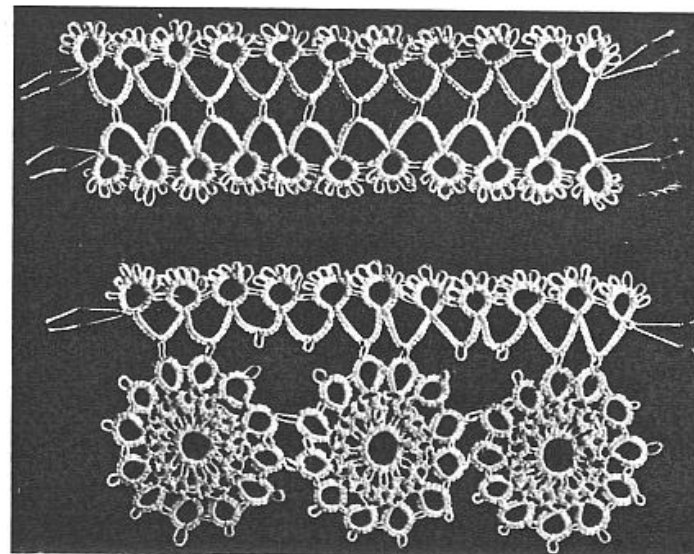


Fig. 21.

SECOND ROW: 1 sh.: form a r. of $1\frac{1}{2}$ d.s. - 1 p. - $2\frac{1}{2}$ d.s. - join to p. of FIRST ROW - $2\frac{1}{2}$ d.s. - 1 p. - $1\frac{1}{2}$ d.s. - close r. - turn - form a r. of 4 d.s. - 1 p. - 4 d.s. - 1 p. - 4 d.s. - 1 p. - 4 d.s. - close r. - *turn - form a r. of $1\frac{1}{2}$ d.s. - join to last p. of previous small r. - $2\frac{1}{2}$ d.s. - join to next p. of FIRST ROW - $2\frac{1}{2}$ d.s. - 1 p. - $1\frac{1}{2}$ d.s. - close r. - turn - form a r. of 4 d.s. - join to last p. of previous large r. - 4 d.s. - 1 p. - 4 d.s. - 1 p. - 4 d.s. - close r. - repeat from* all around - join last small r. to p. of first small r. and join last large r. to p. of first large r. Break off thread and fasten.

For other wheels, repeat from "Edging," joining each wheel to previous wheel in two successive picots.

For TOP OF EDGING, see FIRST ROW of the Insertion and join 2 successive bows to corresponding 2 p. of each wheel.

FIG. 22. INSERTION. (Material as given above.)

FIRST ROW: 1 sh.: form a r. of 4 d.s. - 7 p., separated by 2 d.s. - 4 d.s. - close r.
*2 sh.: turn - bow of 10 d.s. - 1 p. - 10 d.s.
1 sh.: turn - form a r. of 4 d.s. - 3 p., separated by 2 d.s. - join to center p. of

Dorothy Bradford Series #14 pub 1915 pg 6

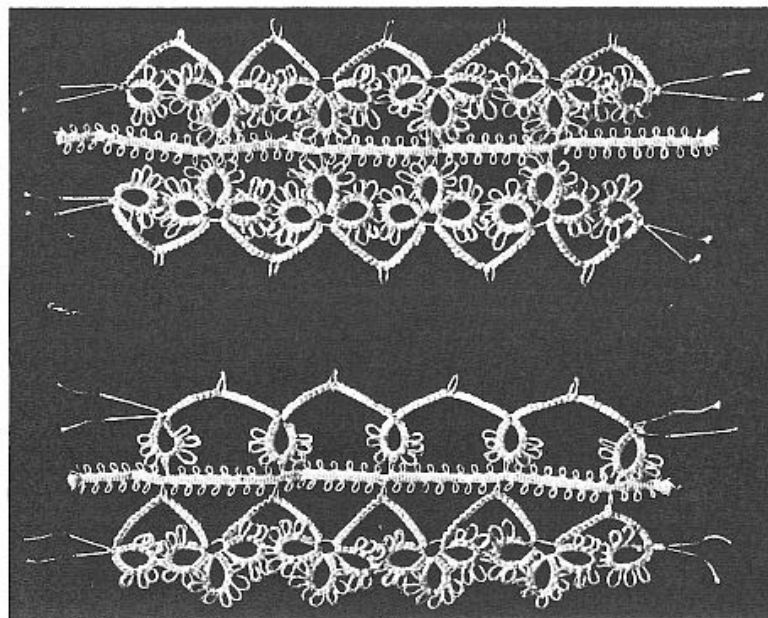


Fig. 22.

first r. - 2 d.s. - 3 p., separated by 2 d.s. - 4 d.s. - close r. - form a r. of 4 d.s. - join to last p. of previous r. - 2 d.s. - 1 p. - 2 d.s. - 1 p. - 2 d.s. - join to a picot of Feather-edge Braid Size 4 - 2 d.s. - 3 p., separated by 2 d.s. - 4 d.s. - close r. - form a r. of 4 d.s. - join to last p. of previous r. - 2 d.s. - 6 p., separated by 2 d.s. - 4 d.s. - close r. - repeat from*, until the desired length is reached. Join to every eighth p. of Feather-edge Braid.

SECOND ROW: On opposite side of braid - same as FIRST ROW.

FIG. 22. EDGING. (Material as given above.)

FIRST ROW: Same as FIRST ROW of Insertion, but join the tatted bow to each eighth p. of braid, Size 4, not the Clover Leaf.

SECOND ROW: On opposite side of braid. *1 sh.: form a r. of 4 d.s. - 3 p., separated by 2 d.s. - join to braid - 2 d.s. - 3 p., separated by 2 d.s. - 4 d.s. - close r. 2 sh.: turn - bow of 10 d.s. - 1 p. - 10 d.s. - turn - repeat from*.

FIG. 23. INSERTION. (Material as given above.)

1 sh.: form a r. of 6 times 2 d.s., separated by 1 p. - close r.

*2 sh.: turn - bow of 6 times 2 d.s., separated by 1 p.

1 sh.: turn - form a r. like previous r. and join to previous r. in the second last p. (where the second p. would come) - and repeat from*, until there are 6 r. and 5 bows. Break off thread and fasten. This completes one shell.

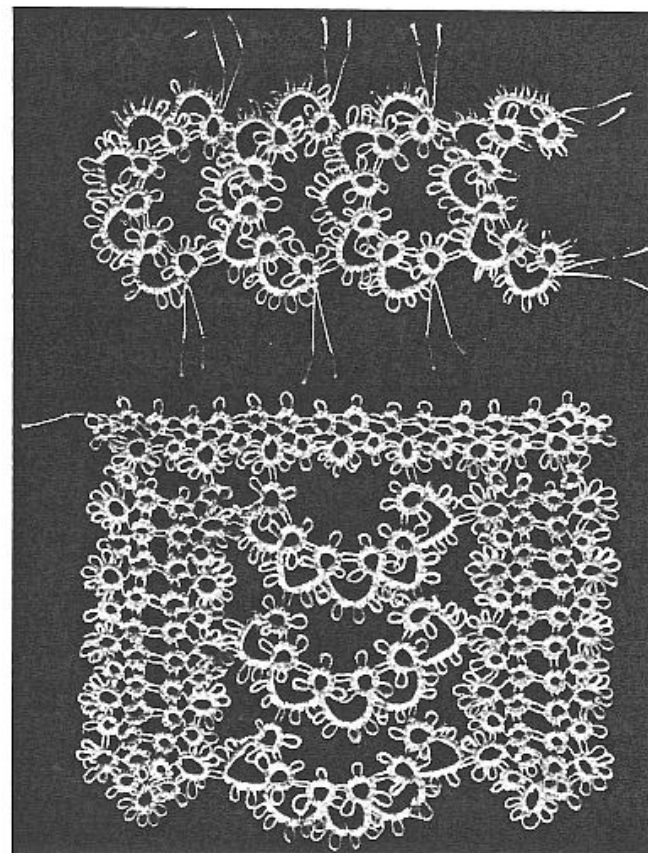


Fig. 23. Note that this Edging makes a wonderfully attractive piece of neckwear, with cuffs to match, or a banding for evening gowns. (In the latter case, use Crochet Cotton 100.)

The next shell is joined to previous one in two places, namely: first r. is joined where its first p. would come, to the center p. of second bow - the last r. is joined where its last p. would come, to the center p. of fourth bow.

Dorothy Bradford Series #14 pub 1915

FIG. 23. EDGING. (Material as given above.)

The shell design is made first, as described under Insertion - make 3 shells.

The panels separating these shell designs are made with 1 sh.: leave $\frac{1}{8}$ " of thread between all the rings - form a small r. of 4 times 2 d.s., separated by 1 p. - close r. - turn - another such small r. - *turn - form large r. of 2 d.s. - join to last p. of first small r. - 2 d.s. - 1 p. - 2 d.s. - 1 p. - 2 d.s. - join to center p. of first bow of first shell (only every second large r. is joined to the shells) - 4 times 2 d.s., separated by 1 p. - close r. - turn - small r. as before, but join to last p. of previous small r. where first p. should come - turn - another small r., but join to last p. of large r. where first p. should come - turn - small r., which join to last p. of previous small r. - repeat from*, until there are five large rings (every second large ring is joined to the shells, as described above) - then 2 more small r. joining them as before - 1 large r., joining it as before - and this brings you to the bottom of panel - 1 small r. joining it to large r. - then continue up the other side to correspond with the one just made, to which join in center p. of each small r. at inside of panel.

For UPPER EDGE OF EDGING, make same as one side of panel, joining the large r. where its center p. would come, to the work already done.

Fig. 1. Embroidered Oval Centerpiece with Crochet Lace.

(CONTINUED FROM PAGE 2.)

Embroidery material, 3 strands of a 4- or 6-stranded mercerized cotton; outside measurement of transfer pattern, D. B. X. Plate No. 1403, is $16\frac{1}{2}$ " x 26", transfer same on heavy linen allowing at least 1" all around for hem; to avoid separate hemming, turn hem just before working the single inside line of border and baste on wrong side to meet exactly the inside line so the outline stitch can be worked through both, thereby finishing off the hem. Note, however, that this single inside line of border is worked last and in light blue.

Work in chain stitch (Fig. 13); on medallions the inner ring of circle and at edge of centerpiece two rows of chain stitches.

Outline all stems, outside circle of medallions and the two small rings of medallions - the balance in solid.

For color scheme, see illustration, Fig. 1.

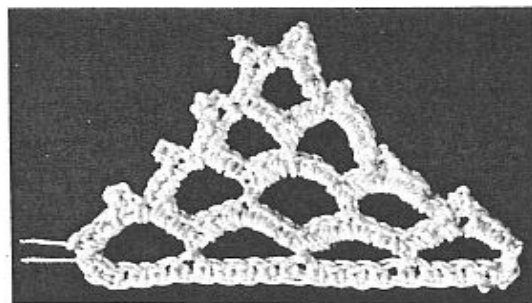


Fig. 24.

For CROCHET EDGING, Fig. 24. (Material, Crochet Cotton 3): 20 s.c. in cloth, covering a space of about 2" of cloth - ch. 6 - skip 4 s.c. - turn - 1 s.c. in fifth s.c. - ch. 6 - 1 s.c. in tenth s.c. - ch. 6 - 1 s.c. in fifteenth s.c. - ch. 6 - 1 s.c. in twentieth s.c. - turn - 4 s.c. over ch. of 6 - 1 p. - 4 s.c. over same ch. - 3 s.c. over next ch. - 8 s.c. over next ch. - 3 s.c. over next ch. of 6 - ch. 6 - turn - 1 s.c. in center of 8 s.c. - ch.

6 - 1 s.c. in center of 8 s.c. - ch. 6 - 1 s.c. after 1 p. - turn - 4 s.c. over ch. of 6 - 1 p. - 4 s.c. over same ch. - 3 s.c. over next ch. - 3 s.c. over next ch. of 6 - ch. 6 - turn - 1 s.c. in center of 8 s.c. - ch. 6 - 1 s.c. after 1 p. - turn - 4 s.c. over ch. of 6 - 1 p. - 4 s.c. over same ch. - 3 s.c. over next ch. of 6 - ch. 6 - turn - 1 s.c. after 1 p. - turn - 3 s.c. over ch. of 6 - 1 p. - 2 s.c. - 1 p. - 3 s.c. over same ch. of 6 - *1 s.c. over remaining st. of next loop - 1 p. - 4 s.c. over same loop - repeat from* twice and continue from "20 s.c. in cloth" all around.

Nut Baskets as Favors.

(CONTINUED FROM PAGE 2.)

Make six small baskets and one large basket to a set.

FIG. 2. SMALL BASKET. (Material, Crochet Cotton 3.)

FIRST ROW: Ch. 8 - turn.

SECOND ROW: Skip 1 st. - 1 s.c. each in next 6 st. - 3 s.c. in last st. of ch. of 8 - ; at opposite side of chain, 1 s.c. each in next 6 st. - 3 s.c. in next st. Total - 18 s.c.

THIRD ROW: *2 s.c. in first s.c. - 3 s.c. in next s.c. - 1 s.c. each in next 5 s.c. - 3 s.c. in next s.c. - 2 s.c. in next s.c. - repeat from*. Total - 30 s.c.

FOURTH ROW: *2 s.c. in first s.c. - 3 s.c. in next s.c. - 1 s.c. each in next 11 s.c. - 3 s.c. in next s.c. - 2 s.c. in next s.c. - repeat from*. Total - 42 s.c.

FIFTH ROW: *2 s.c. in first s.c. - 3 s.c. in next s.c. - 1 s.c. each in 17 s.c. - 3 s.c. in next s.c. - 2 s.c. in next st. - repeat from*. Total - 54 s.c. This finishes the bottom of basket, which must lay perfectly flat.

SIXTH ROW: Ch. 6 - *skip 2 st. - 1 s.c. in next st. - ch. 3 - skip 2 st. - 1 d.c. in next st. - ch. 3 - repeat from* all around - and join last ch. of 3 to third st. of ch. of 6.

SEVENTH ROW: Ch. 8 - 1 d.c. in next d.c. - *ch. 5 - 1 d.c. in next d.c. - repeat from* all around - and join last ch. of 5 to third st. of ch. of 8 with a sl. st.

EIGHTH ROW: Ch. 6 - *skip 2 st. - 1 s.c. over next st. - ch. 3 - 1 d.c. in d.c. - ch. 3 - repeat from* all around - and join last ch. of 3 to third st. of ch. of 6.

NINTH ROW: Same as Seventh Row.

TENTH ROW: Ch. 7 - *skip 2 st. - 1 s.c. in next st. - ch. 4 - 1 d.c. in d.c. - ch. 4 - repeat from* all around - and join last ch. of 4 to third st. of ch. of 7 with a sl. st. - break off thread and fasten.

Now turn work so that wrong side is on inside of basket.

For the HANDLE: Ch. 2 - skip 1 st. - 1 s.c. in next st. - *1 s.c. in left outside loop of preceding row - repeat from* until the desired length is reached - and sew to basket.

FIG. 3. LARGE BASKET. (Continued from page 2.)

Material, Crochet Cotton 3 (or finer if a smaller size is intended).

FIRST FIVE ROWS: Same as Fig. 2.

SIXTH ROW: *2 s.c. in first s.c. - 3 s.c. in next s.c. - 1 s.c. each in 23 s.c. - 3 s.c. in next s.c. - 2 s.c. in next s.c. - repeat from*. Total - 66 s.c.

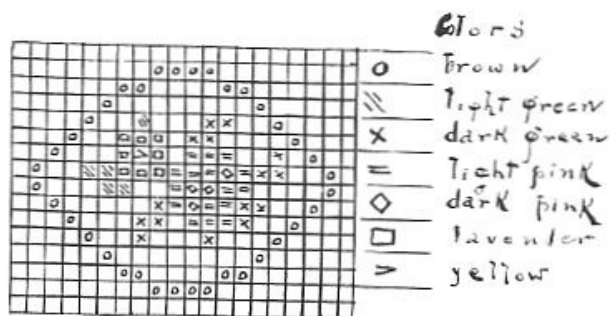


Fig. 27.

Fig. 28. Glove or Handkerchief Case with Medallion in Lace-Stitch.

(CONTINUED FROM PAGE 10.)

Embroidery material, Perlé 5 or similar threads.

After transferring pattern, D. B. X. Plate No. 1402, on suitable material, work medallion as follows: Buttonhole the four triangles - then without working through material, make a loop for the open meshes, catching thread through buttonholing - twist working thread twice around bar of open mesh and continue for each open mesh in same way. For spider's web, catch thread at starting point of row of open meshes, twist around top of open meshes and carry thread along lines of transfer pattern to opposite side - in going back, twist working thread around first thread and continue the same way. For completing web, see Fig. 33. All dots are worked in solid - the edge in buttonhole stitch, and all the balance in outline stitch. Cut away material carefully under triangles.

Fig. 29. Vanity Bag.

(CONTINUED FROM PAGE 10.)

Embroidery material, 2 strands of a 4- or 6-stranded cotton.

On a strip of nainsook - 4" wide and about 9½" long - transfer 6 of the small roses - D. B. X. Plate No. 1402; the last rose is transferred on nainsook, 2" in diameter for bottom of bag.

For color scheme, see illustration, Fig. 29.

All embroidery is made in satin stitch, excepting stem, which is done in outline stitch. The article illustrated is lined in Nile Green messaline - sew ends together for bag. The feather-stitching, Fig. 16, is done through both, nainsook and lining at the same time in the lighter shade of pink.

Embroider pattern on bottom of bag in same colors and cover thin cardboard with same; gather bag at bottom and sew the covered cardboard to same - at inside of bag, another thin cardboard covered with nainsook is sewed to bottom - a piece of narrow ribbon about 14" is sewed to seam of bag.

Fig. 30. Square Doily in Tatting, Used As a Pin Cushion Cover.

(CONTINUED FROM PAGE 10.)

Material, Crochet Cotton 3.

Commence in center of doily.

FIRST ROW: 1 sh.: make 4 rings of 10 d.s. - 1 p. - 10 d.s. each - cut thread and fasten.

SECOND ROW: 1 sh.: make r. of 6 times 2 d.s., separated by 1 p.

2 sh.: join the 2 threads to p. of preceding row - *bow of 5 times 3 d.s., separated by 1 p.

1 sh.: 1 r. of 6 times 2 d.s., separated by 1 p. - join to next p. of preceding row - repeat from* all around. Break off thread and fasten.

THIRD ROW: 1 sh.: 1 r. of 8 d.s. - 4 more d.s. - join to a r. of preceding row, in first p. on left side - 4 d.s. - 1 p. - 8 d.s. - close r. - turn.

*2 sh.: bow of 5 times 3 d.s., separated by 1 p. - turn.

1 sh.: 3 d.s. - join in p. of r. just made - 4 d.s. - join to preceding row in next p. - 4 d.s. - 1 p. - 8 d.s. - close r. - turn - repeat from*, until there are 5 rings - then repeat from "Third Row" with 8 d.s. - join in p. of r. just made - 4 d.s. - join to p. of next r. of preceding row - 4 d.s. - 1 p. - 8 d.s. - close r. - and so on, until all around the Second Row. Then the p. of last r. made is sewed to first r. of same row, between the 8 d.s. and 4 d.s. Break off thread and fasten.

FOURTH ROW: Join both threads in third p. of first bow of preceding row - *2 sh.: bow of 5 times 3 d.s., separated by 1 p. - join to second p. of next bow - 1 bow of 3 times 3 d.s., separated by 1 p. - turn.

1 sh.: form a r. of 8 d.s. - join to last p. of same bow of preceding row - 8 d.s. - close r. - turn.

2 sh.: bow of 4 times 3 d.s., separated by 1 p. - turn.

1 sh.: form a r. of 8 d.s. - join to first p. of next bow of preceding row - 8 d.s. - close r. - turn.

2 sh.: bow of 3 times 3 d.s., separated by 1 p. - skip 1 p. of preceding row and join to next p. - bow of 5 times 3 d.s., separated by 1 p. - join in second p. of next bow of preceding row - bow of 3 times 3 d.s., separated by 1 p. - join in third p. of next bow - repeat from* all around. Break off thread and fasten to first bow.

The Pin Cushion used for this Doily measures 5" in diameter; for the puffed part use color to match pin cushion in silk, crepe or chiffon - the tatted doily is then sewed on to top with a few stitches.

Fig. 31. Handkerchief with Colored Cut-Work Corner.

(CONTINUED FROM PAGE 10.)

Material, white embroidery cotton, shortskain, size 40 - for colors, 2 strands of a 4- or 6-stranded cotton.

After transferring pattern, D. B. X. Plate No. 1402, buttonhole heart towards center, buttonhole butterfly and initial and the 2 separate dots towards outside - the

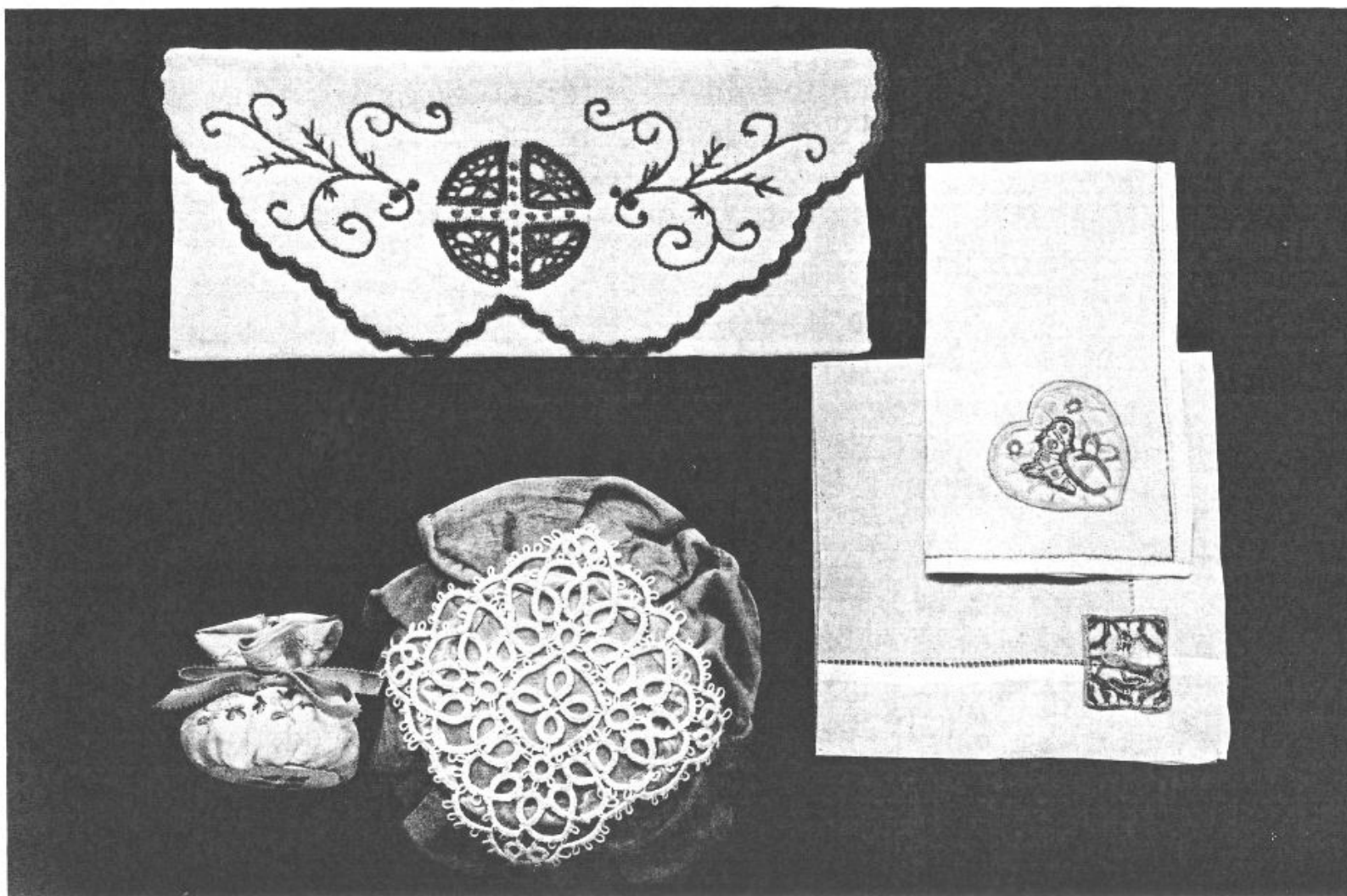


Fig. 28. GLOVE OR HANDKERCHIEF CASE.
For directions, see page 9.
Transfer Pattern will be found on "D.B.X. Plate, No. 1402" of this book.
Duplicate of Transfer Pattern, 10 cents.

Fig. 29. VANITY BAG.
For directions, see page 9.
Transfer Pattern will be found on "D.B.X. Plate, No. 1402" of this book.
Duplicate of Transfer Pattern, 10 cents.

Fig. 30. SQUARE DOILY IN TATTING.
For directions, see page 9.

Fig. 31. HANDKERCHIEF WITH COLORED CUT-WORK CORNER.
For directions, see page 9.
Transfer Pattern will be found on "D.B.X. Plate, No. 1402" of this book. Duplicate of Transfer Pattern, 10 cents.

Fig. 32. HANDKERCHIEF WITH CORNER IN LACE-WORK.
For directions, see page 11.

Fig. 52. Baby's Bonnet in Tatting.

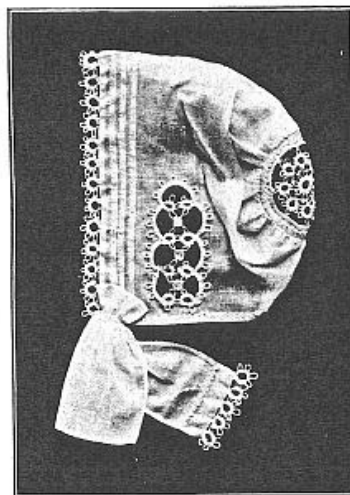


Fig. 52. BABY'S BONNET.

2 d.s. - join to last p. of preceding r. - repeat from* until the required length is reached.

For APPLIQUED FIGURE, Fig. 53.

*1 sh.: form a r. of 4 d.s. - 1 p. - 2 d.s. - 1 p. - 2 d.s. - 1 p. - 4 d.s. - close r. - turn.
2 sh.: bow of 4 times 3 d.s., separated by 1 p. - and repeat from* three more times, but add to the last row: 1 p. - 3 d.s. - 1 p. - 3 d.s. - turn - continue as before: *1 r., which is to be joined with center p. to center p. of preceding r. - 1 bow as before - and repeat from* twice - then 1 more r. Applique the tatted figure to the bonnet - cut away the material and make the three spider's webs by using the 4 p. of tatting in the open spaces, to carry your foundation threads diagonally across, and weave around same, see Fig. 33. For feather-stitching around the bonnet, strings and crown, see Fig. 16.



Fig. 53.

Fig. 54. Booties.

Embroidery material: For padding, 4-strand embroidery floss; for embroidery shortskein 25 or 30 on Linen, a coarser size for Piqué.

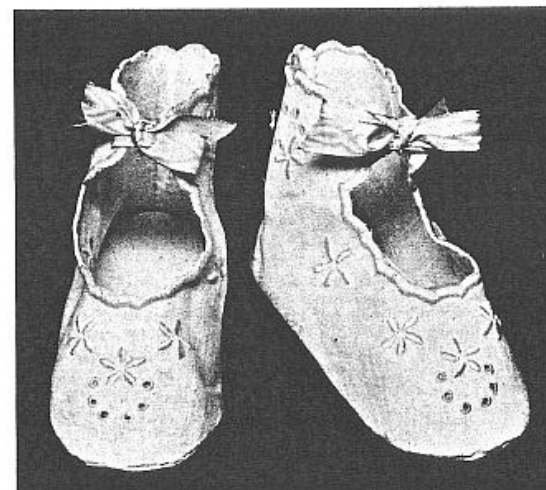


Fig. 54. BOOTIES. Transfer pattern "D.B.X. Plate 1406," 10 cents

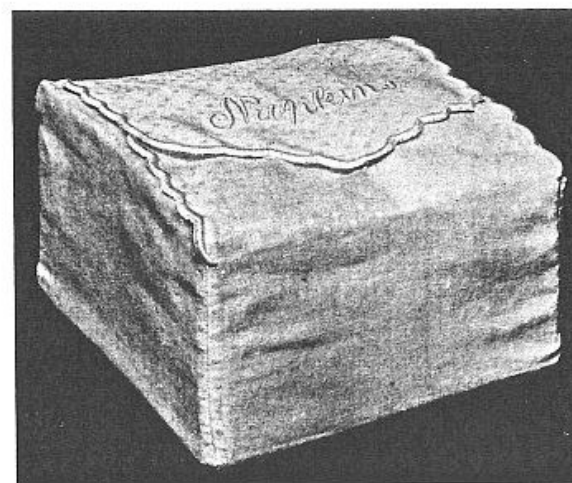


Fig. 55. NAPKIN CASE. Transfer pattern "D.B.X. Plate 1407," 10 cents