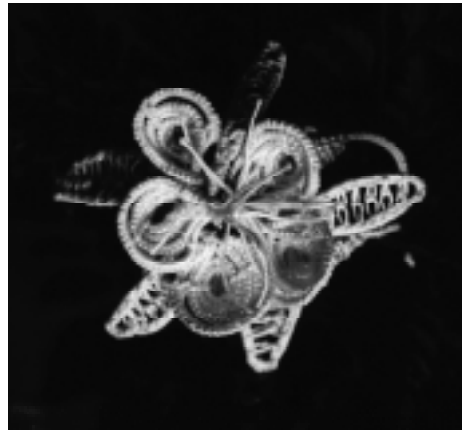


Tatting Flowers in Three-D

The Columbine

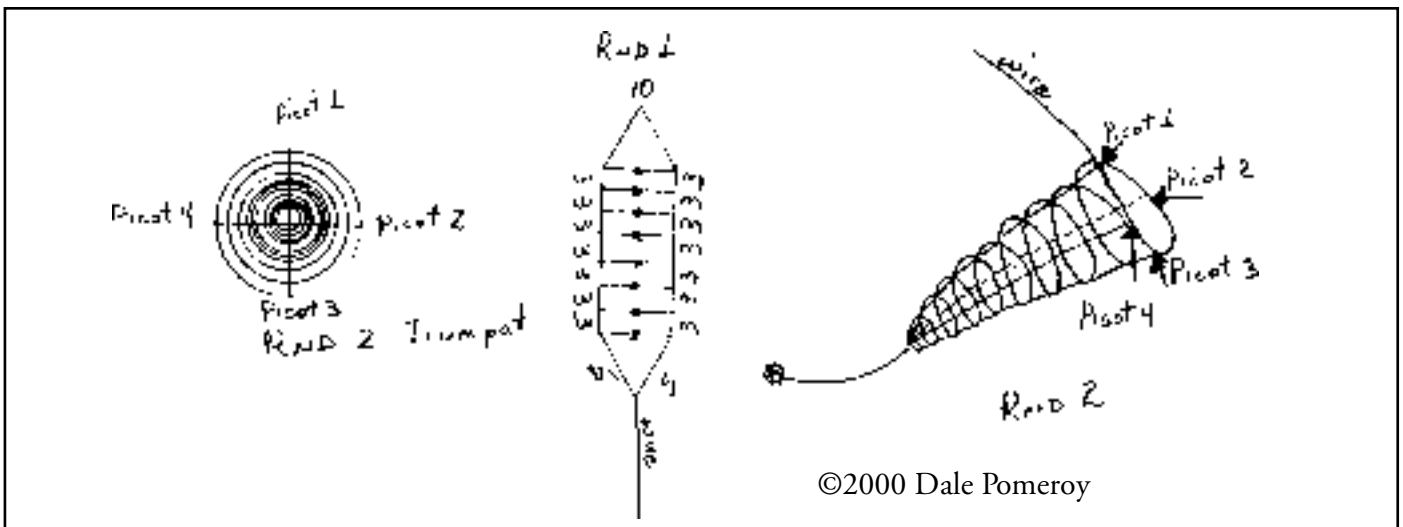
by Dale Pomeroy <madtater@usa.net>



The various components of this beautiful columbine flower were tatted over tiny steel wire.



©2000 Dale Pomeroy



©2000 Dale Pomeroy



© 2000 Sharon Briggs

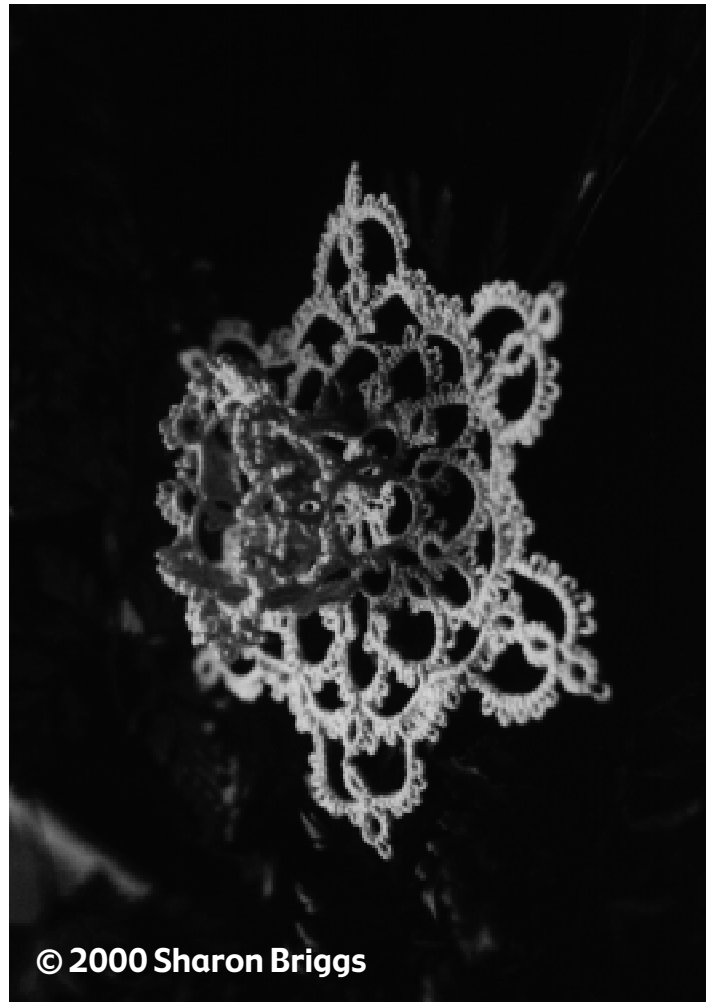
Sharon Briggs has been tatting for over 20 years. When she got married 2 years ago, she decided to tat the flowers for her wedding veil. There weren't very many patterns available so she started to design her own.

When the headpiece was completed, she put pictures of it up on her website and started getting a lot of inquiries about how to tat. Sharon and her husband run a software business together and he has created several videos for their business, so it was a short step for him to create on-line how-to videos that show people how to shuttle-tat, using the traditional method. If you are interested, the address is: <http://www.interlog.com/~gagechek/slb>

Sharon is currently working on a book which she hopes to self-publish this year. It will be called "Transitions in Tatting from Flat to Floral". It begins with the videos from the website converted to filmstrips, some simple and easy patterns to get started, a few traditional edgings, insertions and motifs along with more flat items like hearts, a

The Daffodil

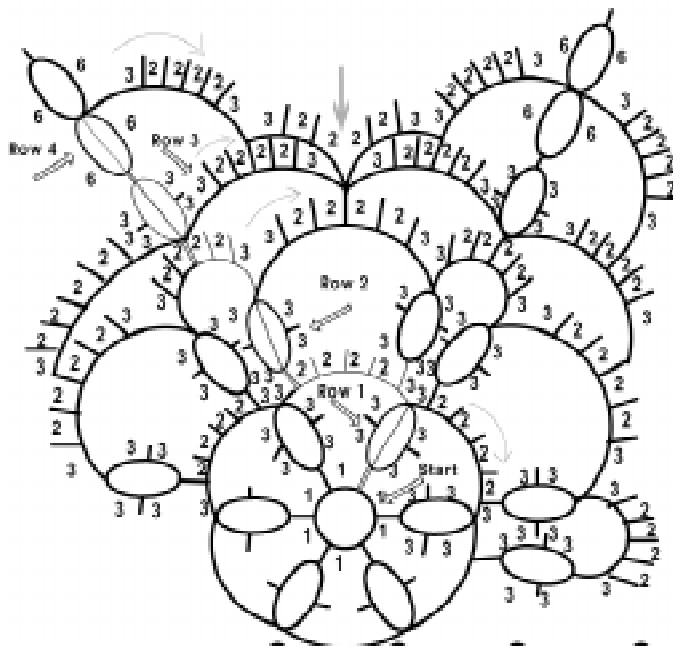
by Sharon Briggs <tatnlace@interlog.com>



© 2000 Sharon Briggs

bunny rabbit, and some bookmarks before progressing to a couple of bags a 3D angel and of course, flowers. Besides this daffodil she has designed a tulip, a stargazer lily, an orchid, a daisy and a tiny rose.

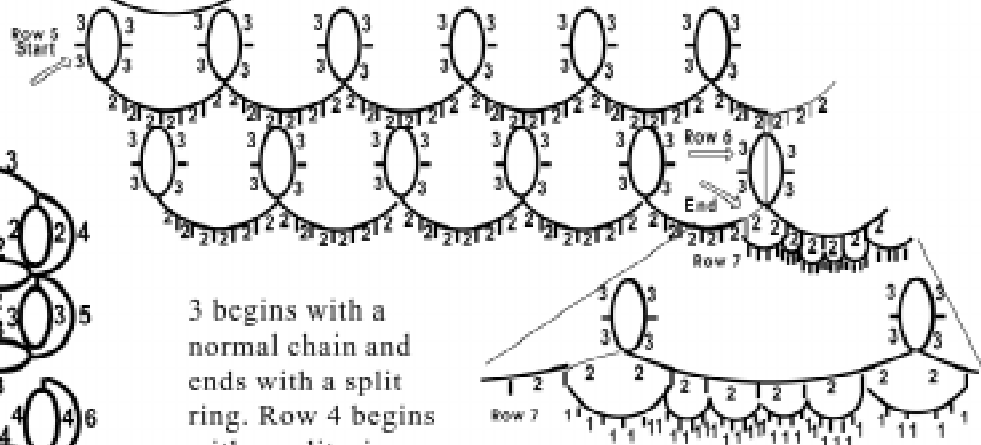
The design is basically an edging with a graduated shape, so it isn't very complicated. Note: The leaf described in the instructions is not shown in the pictures.



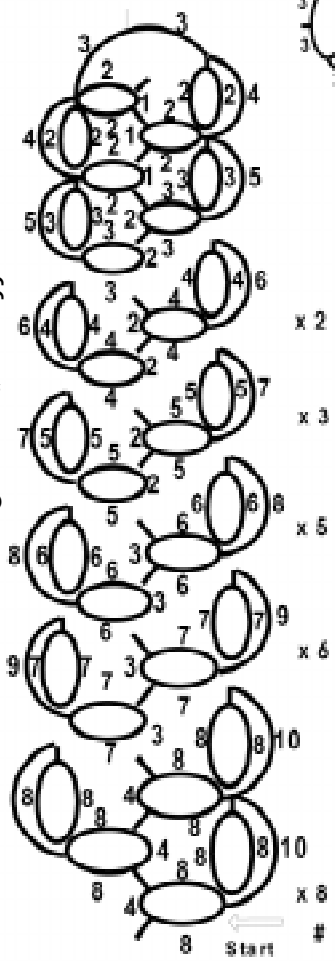
Daffodil

This pattern needs 2 shuttles and utilizes both split rings and split chains, although it can be completed without using these techniques by cutting the thread after each round. It may be worked in either size 20 crochet cotton or size 8 perle cotton. The short lines are picots, the ovals are rings, an oval with a line through it is a split ring and the fine lines represent split chains. The beginning point of each row and the direction of the row is marked with an arrow.

Row 1 and 2 begin with a split ring and end with a split chain. Row



© 2000 Sharon Briggs



3 begins with a normal chain and ends with a split ring. Row 4 begins with a split ring and the thread is cut, tied and hidden after the end of the row. This finishes the base of the flower.

On Row 5 the tip of each ring is joined perpendicular to the base of the rings in Row 1, forming the trumpet of the flower and the row is finished with a split chain. Row 6 begins with a split ring and ends with a very short split chain. Row 7 is a series of short chains full of picots that form a ruffle around the edge of the trumpet. The diagram shows an inset of Row 7 for clarification.

Leaf

The leaf is approximately 7 inches long done in size 20 thread using the number of repeats indicated and is made like an insertion, worked up one side in decreasing size and down the other in increasing size. To make a longer leaf, increase the number of pattern repeats in the lower segments.

Forever Roses

by Kim Millar <docKim@mb.sympatico.ca>



Wind your shuttle with thread. Tie ball and shuttle thread together. Leave ends hanging.

They will be covered with tape when the rose is finished, and meanwhile it will be a help to hold the rose while you are working.

One rose is composed of 4 small petals, 4 medium petals and 4 large petals joined at the base in a circle, continuing around and around until all petals are completed. Be careful that the petals don't twist. I have used Opera Size 20 thread or 3 strands of Embroidery thread. A cup-shaped calyx decorates the back of the rose. To assemble the flower: put the end of a wire stem through the tatted at the base of the rose and twist the end around the wire stem. Thread the calyx onto the wire stem until it is tight against the rose and the rose is sitting in the cup of the calyx. Thread the remaining ends from the tatted rose down through the center of the calyx while you are bringing it up the wire stem. With florist tape, wrap the stem well from the base of the calyx and rose to the end, inserting rose leaves where you want them.



Our readers are grateful to Lace Magazine International Tatting Editor Georgia Seitz who assembled the expert tatters to make the flowers for this article. Georgia will gladly answer any questions regarding tatting tips, or refer you to new books, events, artists and tatting lessons – even online. She can be contacted via her webpage www.georgiaseitz.com/