

Tatted Edging

A-295

Illustrated on Page 13

J. & P. COATS "KNIT-CRO-SHEEN," Art. A. 64:
1 ball of No. 25 Crystal Blue.

Tatting shuttle.

Edging measures about 2 inches wide.

With ball and shuttle threads. **1st row:** Sr of 2 ds, (p, 2 ds) 4 times and cl. * Rw, ch of 1 ds, 5 p's sep by 1 ds and 1 ds. Rw, r of 2 ds, (p, 2 ds) twice, join to last p of previous sr, 2 ds, (p, 2 ds) twice and cl. R of 2 ds, join to last p of previous r, 2 ds, (p, 2 ds) 5 times and cl. Lr of 2 ds, join to last p of previous r, 2 ds, (p, 2 ds) 6 times and cl. R of 2 ds, join to last p of lr, 2 ds, (p, 2 ds) 5 times and cl. R of 2 ds, join to last p of previous r, 2 ds, (p, 2 ds) 4 times and cl. Rw, ch of 1 ds, 5 p's sep by 1 ds and 1 ds. Rw, sr of 2 ds, join to center p of previous r, 2 ds, (p, 2 ds) 3 times and cl—scallop made. Rw, ch as before. Rw, sr of 2 ds, p, 2 ds, join to next-to-last p of previous sr, 2 ds, (p, 2 ds) twice and cl. Repeat from * for desired length, ending with second sr of scallop. Tie and cut. **2nd row:** Tie ball and shuttle threads together. Attach thread to second p of first sr, on first scallop, ch of 1 ds, 5 p's sep by 1 ds and 1 ds, join to center p of first ch on same scallop, * ch as before joining to center p of next ch. Repeat from * across, join to third p of last sr. Tie and cut. **3rd row:** Tie threads as before. Sr of 2 ds, p, 2 ds, join to center p of first ch on previous row, 2 ds, p, 2 ds and cl. * Rw, ch of 1 ds, 5 p's sep by 1 ds and 1 ds. Rw, r as before joining to center p of next ch. Repeat from * across. Tie and cut. **4th row:** Tie threads, ch of 1 ds, p, 3 ds, join to center p of first ch on previous row. * Ch of 3 ds, p and 3 ds, join to center p of next ch. Repeat from * across, ending with ch 3, p and 1 ds. Tie and cut.

Lower Edge: Tie threads and attach to second p of second sr on last scallop. * ch of 1 ds, 3 p's sep by 1 ds and 1 ds, skip next 2 free p's on same scallop and join to next free p. (Ch as before, skip

next free p and join to next free p) 5 times. Ch as before, skip next 2 free p's and join to next free p of sr. Ch of 3 ds and join to next free p of next sr. Repeat from * across, ending to correspond. Tie and cut.

Hairpin Lace Edging

A-296

Illustrated on Page 13

J. & P. COATS "KNIT-CRO-SHEEN," Art. A. 64;
and

J. & P. COATS METALLIC "KNIT-CRO-SHEEN,"
Art. A. 64-M.

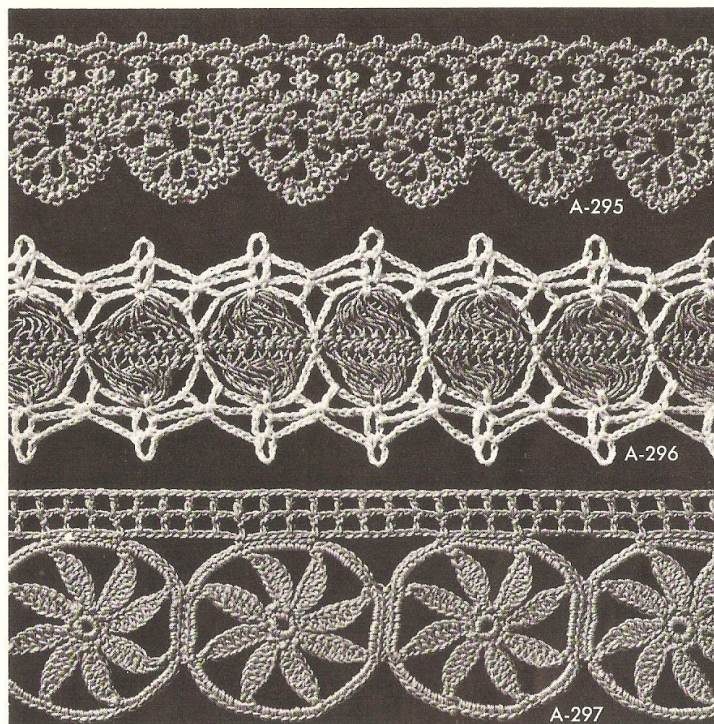
Milwards Steel Crochet Hook No. 7.

Edging measures about 3 inches wide.

CENTER STRIP . . . Following Basic Instructions on page 35, with Art. A. 64-M make a strip of hairpin lace desired length, being sure to have a multiple of 9 loops on each side of staple (see page 10). Break off and fasten. Attach Art. A. 64 in last sc made.

HEADING . . . 1st rnd: Ch 1, sc in last sc made, * ch 9, keeping twist in all loops throughout and working along long edge, insert hook through 9 loops and make an sc (9-loop cluster made); ch 9, sl st in the sc between last loop used and next loop at center of strip. Repeat from * around, making the sl sts on second long edge in same place as sl sts of first long edge and ending with ch 9. Join with sl st to first sc. **2nd rnd:** Ch 10, ** dc in next ch-9 loop, * ch 5, in sc at tip of next cluster make sc, ch 5 and sc; ch 5, dc in next 2 ch-9 loops. Repeat from * across long edge, ending with ch 5, dc in last loop; ch 8, h dc in sc at narrow edge, ch 8. Repeat from ** around, ending with ch 8. Join to 2nd ch of first ch 10. **3rd rnd:** Ch 10, ** sc in next dc, * ch 6, skip next sp, in next ch-5 loop make sc, ch 5 and sc; ch 6, sc between next 2 dc. Repeat from * across long edge, ending with ch 6, sc in last dc, ch 8, h dc in next h dc on narrow edge, ch 8. Repeat from ** around, ending as on 2nd rnd. Break off and fasten. Sew in place.

Coats & Clark #121 pg 13 pattern A-295



Crocheted Edging

A-297

J. & P. COATS "KNIT-CRO-SHEEN," Art. A. 64.

Milwards Steel Crochet Hook No. 7.

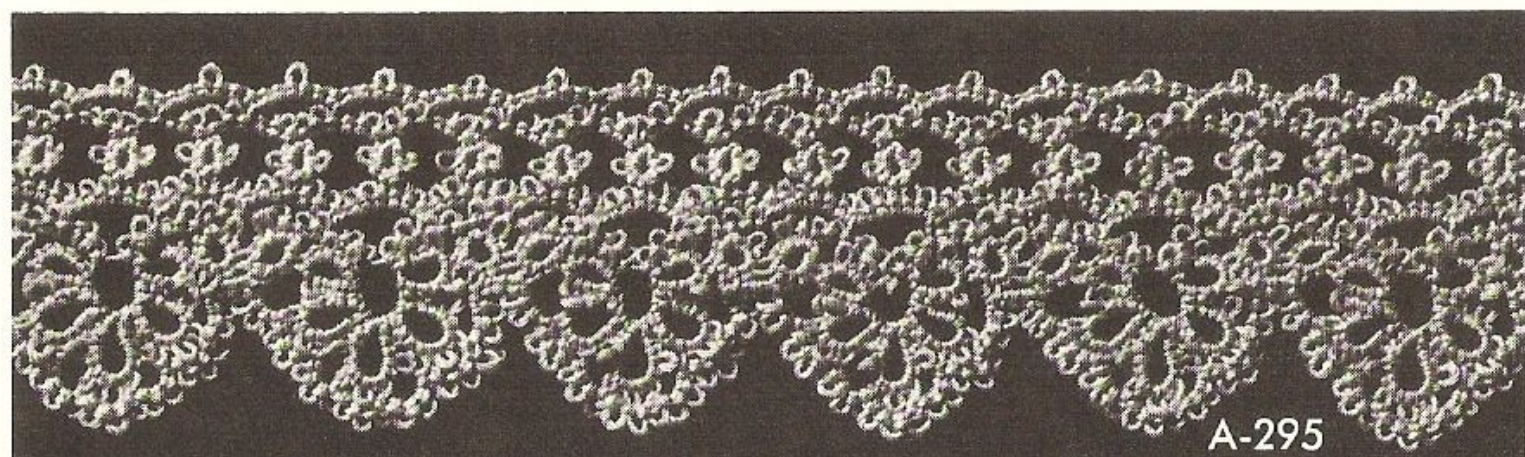
Edging measures about 2 3/4 inches wide.

MOTIF . . . Starting at center ch 6. Join with sl st to form ring. **1st rnd:** Ch 1, 8 sc in ring. Join to first sc. **2nd rnd:** (Ch 9, sc in 2nd ch from hook, h dc in next ch, dc in next 4 ch, h dc in next ch, sc in next ch, sl st in next sc on ring—

petal made) 8 times. Break off and fasten. **3rd rnd:** Attach thread to tip of any petal, sc in same place, ch 7, (sc in tip of next petal, ch 7) 7 times. Join to first sc. **4th rnd:** Make 9 sc in each loop around. Break off and fasten. Make desired number of motifs sewing them together as follows: With right side of 2 motifs together and picking up outer loops only (the 2 inner loops will form 2 ridge lines on right side), neatly sew the 9 sc between 2 petals together. Sew remaining motifs together in same way, having 3 loops free between joinings.

Continued on page 14

Coats & Clark #121 pg 13 pattern A-295



A-295

E chains only joining to center picots of D chains

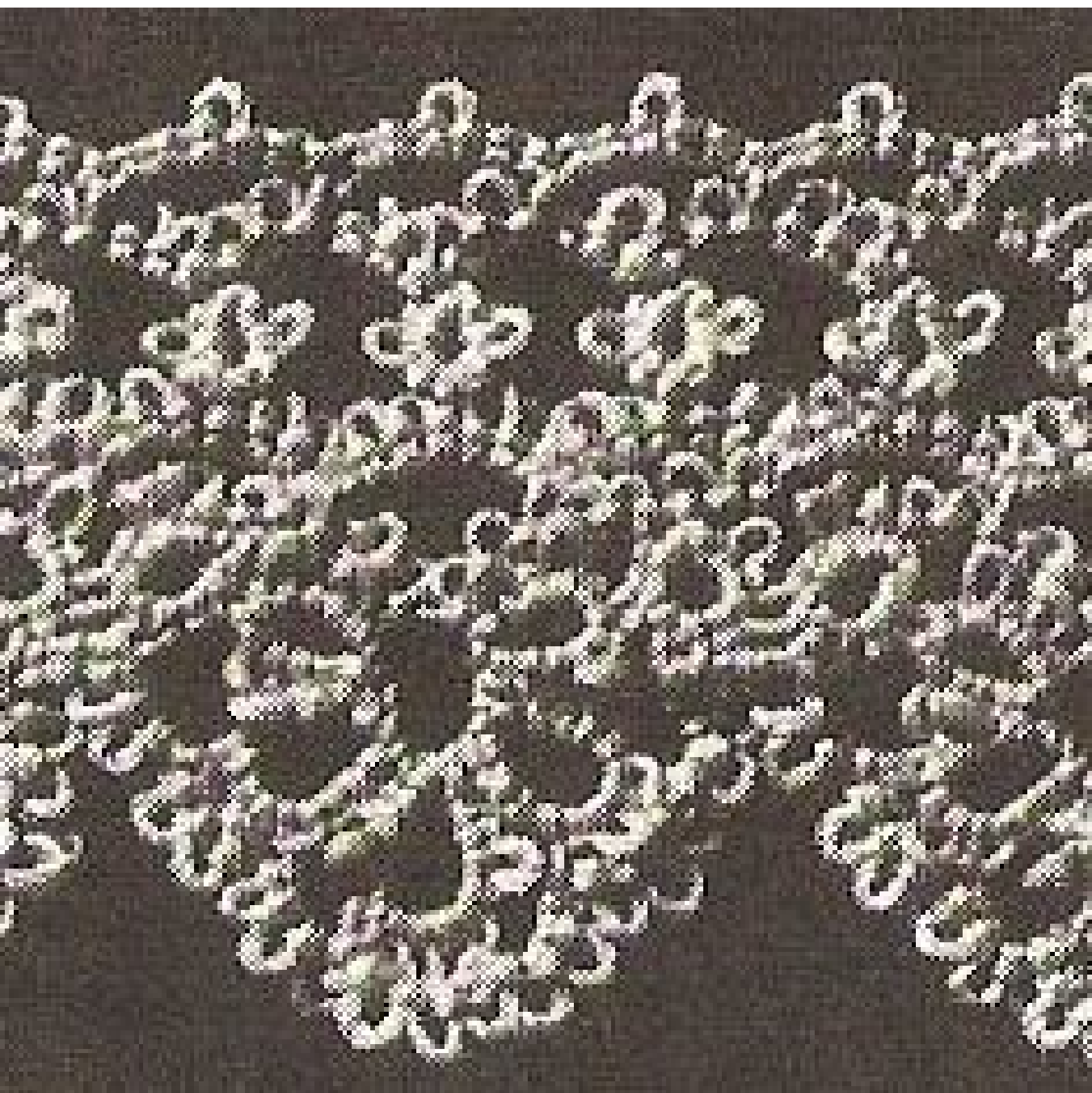
D alternate chains &
rings joining to c
picots

C = Chains across

B short chain tiny chain short chain



* = start of scallop of five rings no chains



Tatted Edging

A-314

J. & P. COATS "KNIT-CRO-SHEEN," Art. A. 64:

1 ball each of No. 1 White and No. 10-A Canary Yellow.

Tatting shuttle.

Edging measures about 3 inches wide.

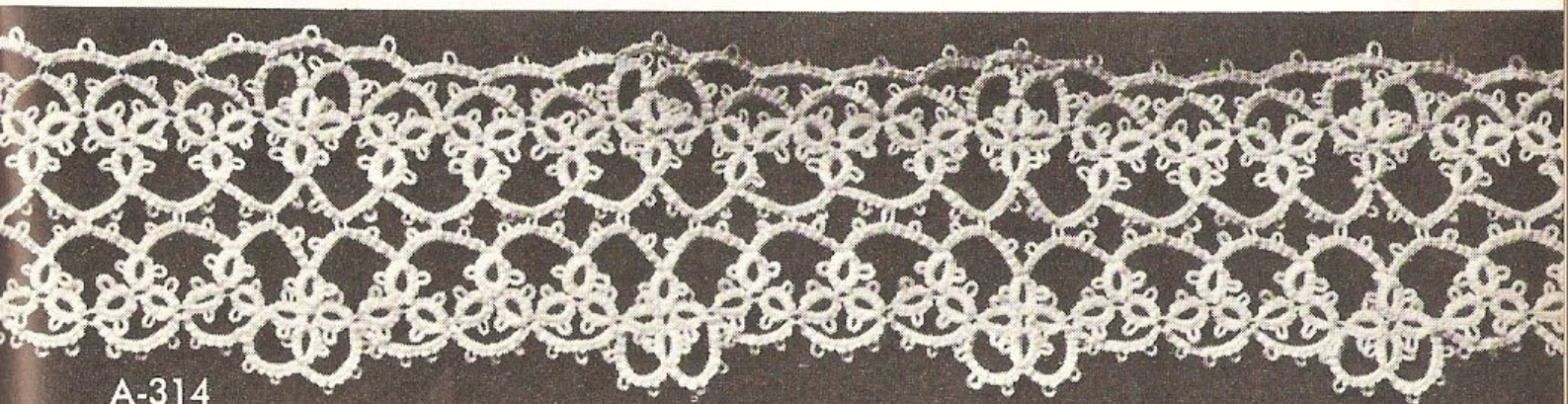
With White on shuttle and Yellow on ball, tie threads together.

1st row: * R of 3 ds, (p, 3 ds) 3 times and cl. (Rw, ch of 3 ds, 3 p's sep by 3 ds and 3 ds. Rw, r of 3 ds, p, 3 ds, join to center p of first r, 3 ds, p, 3 ds and cl) twice. (R of 3 ds, 3 p's sep by 3 ds, 3 ds and cl. Rw, ch as before. Rw, r of 3 ds, p, 3 ds, join to center p of previous ring, 3 ds, p, 3 ds and cl) 3 times. Repeat from * for desired length, ending with 3-ring group. Turn. **2nd row:** Continue to work on opposite side of strip, rw, ch of 3 ds, 3 p's sep by 3 ds and 3 ds. Rw, r of 3 ds, p, 3 ds, join to same center p of last group made, 3 ds, p, 3 ds and cl. * Rw, ch of 3 ds, 3 p's sep by 3 ds and 3 ds. Rw, r of 3 ds, p, 3 ds, skip next 2 r's and join to center p of next group, 3 ds, p, 3 ds and cl. Repeat from * across, ending with ch, join at base of first r on first row. Tie and cut. **3rd row:** Tie ball and shuttle threads together as before, ch of 3 ds, p, 3 ds, join to center p of last ch on second row, 3 ds, p and 3 ds. * Rw, r of 3 ds, (p, 3 ds) 3 times and cl. Rw, ch as before, joining to center p of next ch on same row. Repeat from * across, ending with ch, joined to first ch on second row. Turn. **4th row:**

Rw, * (r of 3 ds, p, 3 ds, join to center p of last r on third row, 3 ds, p, 3 ds and cl. Rw, ch of 3 ds, 3 p's sep by 3 ds and 3 ds) twice. Rw, r as before joining to center p of same r as before. (R of 3 ds, p, 3 ds, join to center p of next r on third row, 3 ds, p, 3 ds and cl. Rw, ch as before. Rw, r as before joining to center p of same r) 3 times. Repeat from * across, joining to next r on third row. Complete row to correspond, joining at beginning of first ch on third row. Tie and cut. **5th row:** Tie threads together as before and attach thread to center p of first ch on 4th row, * ch of 3 ds, p and 3 ds, join to center p of next ch on same row. Repeat from * across. Tie and cut. Press lightly. Sew in place.

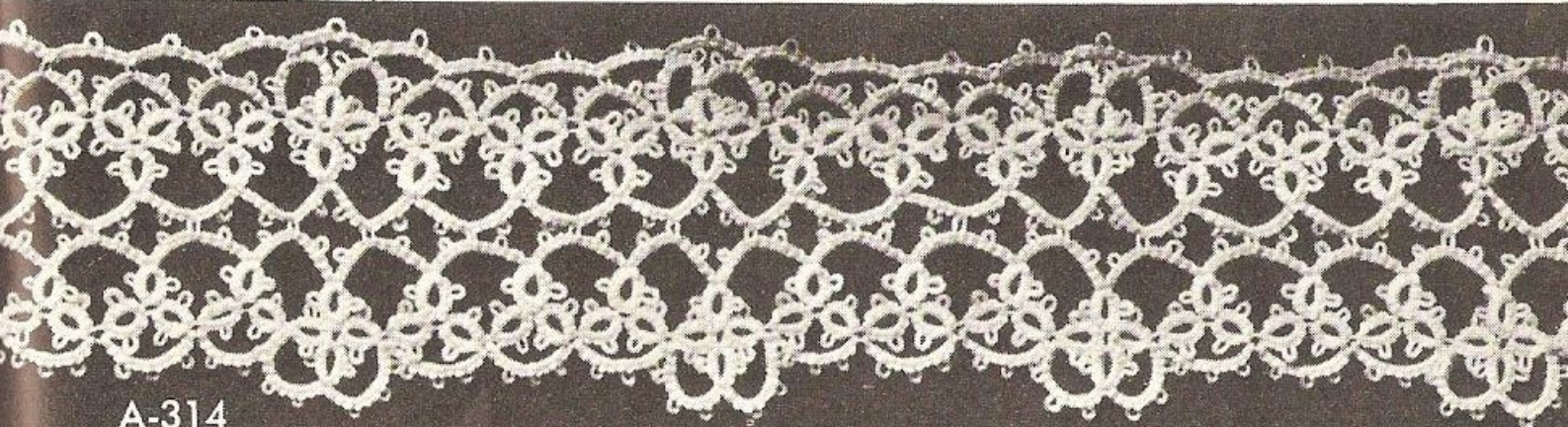
A-313 . . . Continued from page 30

p.s.s.o.; k 3, O, k 2 tog, k 1—21 sts, counting as before. **7th row:** Sl 1, k 1, p.s.s.o.; O, k 11, O, k 1; sl 1, k 1, p.s.s.o.; k 2, O, k 2 tog, k 1—21 sts. **9th row:** Sl 1, k 1, p.s.s.o.; O, k 1, slip first st (at point) on right-hand needle back onto left-hand needle, pass the following 10 sts on left-hand needle (one at a time) over this st and off left-hand needle, then slip the st back on right-hand needle; O, k 2; sl 1, k 1, p.s.s.o.; k 1, O, k 2 tog, k 1—11 sts. **11th row:** K 1, O, k 2 tog, O, k 3; sl 1, k 1, p.s.s.o.; O, k 2 tog, k 1—11 sts. Repeat 2nd to 11th rows incl for pattern. Work in pattern for desired length, ending with 2nd pattern row. Bind off. Block to measurement. Sew in place.



A-314





A-314

Coats & Clark #121 pg 31 pattern A-314





Tatted Flower Insertions and Edgings

Illustrated on
Center Spread
(Pages 8 and 9)

EI-295 Page 8

MATERIALS:

J. & P. Coats Tatting-Crochet, Size 70,
1 ball each of Blue (No. 8), Bright
Nile Green (No. 26-B) and Hunter's
Green (No. 48). Scraps of Yellow.

LEAVES AND STEMS . . . With Hunter's Green, tie ball and shuttle threads together. * R of 10 ds, p, 10 ds, cl. Rw, r of 10 ds, p, 10 ds, cl (2 leaves made). Rw, ch of 20 ds, draw tightly to form a curve (stem made). Rw, make 2 more leaves as before. Reversing curve of chain, make ch as before. Rw, repeat from * for length desired. Tie and cut.

FLOWER . . . With Blue, r of 5 ds, 3 p's sep by 5 ds, 5 ds, cl. (R of 5 ds, join to p of preceding r, 2 p's sep by 5 ds, 5 ds, cl) 3 times, joining last r to first r. Tie and cut. Attach to center of first stem by making a French knot of Yellow in center of flower. Tie and cut. Make another flower and attach to next stem. Continue for length desired.

HEADING . . . With Bright Nile Green, tie ball and shuttle threads together. R of 5 ds, join to p of r at top of first flower, * 5 ds, cl. Rw, ch of 5 ds, p, 5 ds, join to p of top leaf of 2 leaves made. Ch of 5 ds, p, 5 ds, join to top r of next flower. Ch as before, join to top leaf of next 2 leaves. Ch as before. Rw, r of 5 ds, join to next flower. Repeat from * across. Tie and cut.

INSERTION . . . Make exactly as for Edging. Attach Bright Nile Green to opposite side of first flower. Ch of 5 ds, p, 5 ds, join to p of 2nd leaf of first 2 leaves. * Ch of 5 ds, p, 5 ds. Rw, r of 5 ds, join to next flower, 5 ds, cl. Rw, ch as before, join to 2nd leaf of next 2 leaves. Ch as before, join to next flower. Ch as before, join to next leaf. Repeat from * across. Tie and cut.

EI-296 Page 9

MATERIALS:

J. & P. Coats Tatting-Crochet, Size 70,
Shaded Yellows (No. 19), Light
Blue (No. 7) and Bright Nile Green
(No. 26-B).

LARGE FLOWER . . . With Shaded Yellows, r of 5 ds, 3 p's sep by 10 ds, 5 ds, cl. (R of 5 ds, join to last p of preceding r, 10 ds, 2 p's sep by 10 ds, 5 ds, cl) 4 times, joining last r to first r. Tie and cut. Attach Light Blue to center of flower, (r of 5 ds, cl) 3 times. Join to center of flower. Tie and cut. Make necessary number of large flowers.

SMALL FLOWER . . . With Blue, r of 10 ds, join to p between r's of Large Flower, 10 ds, cl. R of 10 ds,

p, 10 ds, cl. R of 10 ds, join to p between r's of next Large Flower, 10 ds, cl. R of 10 ds, p, 10 ds, cl. Tie and cut. Make necessary number of Small Flowers, joining each between Large Flowers as before, having 2 r's free on Large Flowers at top.

HEADING . . . With Bright Nile Green, tie ball and shuttle threads together. R of 10 ds, join to p between 2 r's of First Large Flower (preceding the joining of Large and Small Flowers), 10 ds, cl. Rw, ch of 5 ds, 3 p's sep by 5 ds, 5 ds, join to p of r of Small Flower, * ch of 5 ds, join to last p of preceding ch, 5 ds, 2 p's sep by 5 ds, 5 ds. Rw, r of 10 ds, join to p between 2 r's of next Large Flower, 10 ds, cl. Rw, ch of 5 ds, 3 p's sep by 5 ds, 5 ds, join to next Small Flower. Repeat from * across. Tie and cut.

INSERTION . . . Work exactly as for Edging.

Now work Heading along opposite long side as follows: With Bright Nile Green, r of 10 ds, join to p between r's at opposite side of first Large Flower, 10 ds, cl. Rw, ch of 5 ds, 3 p's sep by 5 ds, 5 ds, join to p of free r of Small Flower. * Ch of 5 ds, join to last p of preceding ch, 5 ds, 2 p's sep by 5 ds, 5 ds. Rw, r of 10 ds, join to p between r's of next Large Flower (following the joining of Small and Large Flowers), 10 ds, cl. Rw, ch of 5 ds, p, 5 ds. Rw, r of 10 ds, join to p between next 2 r's of same Large Flower, 10 ds, cl. Rw, ch of 5 ds, 3 p's sep by 5 ds, 5 ds, join to next Small Flower. Repeat from * across. Tie and cut.

EI-297 Pages 8 and 9

MATERIALS:

J. & P. Coats Tatting-Crochet, Size 70,
1 ball each of Dark Lavender (No.
37) and Shaded Greens (No. 21).

FIRST FLOWER . . . With Dark Lavender, r of 5 ds, 3 p's sep by 8 ds, 5 ds, cl. * (R of 5 ds, join to last p of preceding r, 8 ds, 2 p's sep by 8 ds, 5 ds, cl) 4 times, joining last r to first r. Tie and cut.

SECOND FLOWER . . . R of 5 ds, join to p of r of First Flower, 8 ds, 2 p's sep by 8 ds, 5 ds, cl. (R of 5 ds, join to p of preceding r, 8 ds, 2 p's sep by 8 ds, 5 ds, cl) 4 times, joining last r to first r. Tie and cut.

THIRD FLOWER . . . R of 5 ds, p, 8 ds, join to p of next r of First Flower, 8 ds, p, 5 ds, cl. (R of 5 ds, join to last p of preceding r, 8 ds, 2 p's sep by 8 ds, 5 ds, cl) 3 times. (R of 5 ds, join to last p of preceding r, 8 ds, join to next p between r's of Second Flower, 8 ds, join to p of first r of same flower, 5 ds, cl (scallop made). Tie and cut.

FOURTH FLOWER . . . R of 5 ds, p, 8 ds, join to p of r of Third Flower to correspond, 8 ds, p, 5 ds, cl. Repeat from * for length desired. Tie and cut.

HEADING . . . With Shaded Greens, tie ball and shuttle threads together. R of 7 ds, p, 7 ds, cl. Join to p of r of First Flower (at extreme left). Rw, ch of 8 ds, 2 p's sep by 8 ds, 8 ds, join to p of r (previously joined, First and Third Flowers). * Rw, r as before. Rw, ch as before and join to p between next 2 flowers. Repeat from * across. Tie and cut.

INSERTION . . . Repeat First, Second and Third Flowers of Edging.

FOURTH FLOWER . . . R of 5 ds, join to Third Flower as Second Flower was joined to First Flower, 8 ds, 2 p's sep by 8 ds, 5 ds, cl. (R of 5 ds, join to preceding r, 8 ds, 2 p's sep by 8 ds, 5 ds, cl) 3 times. R of 5 ds, join to preceding r, 8 ds, join to p of adjoining r of Second Flower, 8 ds, join to first r of same flower. Tie and cut.

FIFTH FLOWER . . . R of 5 ds, 8 ds, join to p of adjoining r of Third Flower and complete flower as for First Flower of Edging. Continue to work in this manner for length desired.

HEADING . . . Work Heading as for Edging. Tie ball and shuttle threads to opposite side of p of r of Second Flower. Ch of 8 ds, 2 p's sep by 8 ds, 8 ds. Rw, r of 7 ds, join to p between r's of Second and Fourth Flowers, * 7 ds, cl. Rw, ch as before. Rw, r of 7 ds, join between next 2 flowers. Repeat from * across. Tie and cut.

EI-298 Pages 8 and 9

MATERIALS:

J. & P. Coats Tatting-Crochet, Size 70,
1 ball each of Shaded Dark Pinks
(No. 15-A), Shaded Greens (No.
21) and Hunter's Green (No. 48).

FLOWER . . . With Shaded Dark Pinks, sm r of 1 ds, 8 p's sep by 1 ds, 1 ds, cl. Tie and do not cut. Sp of 1/16 inch, join to first p of sm r, r of 5 ds, 3 p's sep by 5 ds, 5 ds, cl. (Sp of 1/16 inch, join to next p of sm r. R of 5 ds, join to last p of preceding r, 5 ds, 2 p's sep by 5 ds, 5 ds, cl) 7 times, joining last r to first r. Tie and cut. R of 5 ds, 3 p's sep by 5 ds, 5 ds, cl. Sp of 1/8 inch, join to p between r's. (Sp of 1/8 inch, r of 5 ds, join to last p of preceding r, 5 ds, 2 p's sep by 5 ds, 5 ds, cl. Sp of 1/8 inch, join to p between next 2 r's) 8 times. Tie and cut. Make necessary number of flowers.

STEMS AND LEAVES . . . With Shaded Green, tie ball and shuttle threads together. Fasten to p between r's of flower. * Ch of 5 ds. Rw, r of 10 ds, p, 10 ds, cl. Rw, r of 10 ds, p, 10 ds, cl. Reverse curve of chain. Ch of

Continued on page 11

EI-298 Continued from page 10

10 ds. Rw, r of 5 ds, p, 10 ds, cl. R of 7 ds, p, 7 ds, cl—center r. Rw, r of 10 ds, p, 5 ds, cl. Rw, ch of 5 ds. Fasten to p between r's of next flower, carry threads on wrong side of work to opposite side of same flower. Skip 4 rings and fasten to p between r's. Repeat from * across. Tie and cut.

FLOWER BUD . . . * With Shaded Dark Pinks, r of 7 ds, p, 7 ds, cl. Tie and cut. Attach Shaded Greens at base of r. Ch of 5 ds, join to p of 10 ds-p-10 ds ring. Ch of 2 ds. Rw, r of 7 ds, join to p between r's of 2nd flower (preceding previous joining), 7 ds, cl. Rw, r of 7 ds, join to p of next r of same flower, 7 ds, cl. Tie and cut. Repeat from * and join to next flower. Continue across.

HEADING . . . With Hunter's Green, tie ball and shuttle threads together. Attach to p of 3rd r of preceding previous joining of First Flower. Ch of 5 ds, p, 5 ds, join to p of next r of same flower. * Ch as before, join to p of center r of Stems and Leaves. Skip r of next flower. (Ch and join to p of next r of same flower) twice. Repeat from * across.

INSERTION . . . Work as for Edging.

Attach Hunter's Green to p of r at opposite side of First Flower. Ch of 5 ds, p, 5 ds, join to p of next r of same flower. * Ch as before and join to p of Bud. Ch as before, join to p of next r of next flower. Ch as before, join to p of next r of same flower. Repeat from * across. Tie and cut.

EI-299 Pages 8 and 9**MATERIALS:**

J. & P. Coats Tatting-Crochet, Size 70, 1 ball each of Salmon Pink (No. 123) and Shaded Greens (No. 21).

FLOWER . . . With Salmon Pink, (r of 10 ds, p, 10 ds, cl) 5 times. Tie and do not cut. (R of 15 ds, p, 15 ds, cl) 6 times. Tie and cut. Make as many flowers as desired.

STEMS AND LEAVES . . . With Shaded Greens, tie ball and shuttle threads together. Attach to flower, * (on wrong side) ch of 10 ds, p, 3 p's sep by 10 ds, 10 ds, join to next flower. Repeat from * across. Tie and cut.

HEADING . . . With Shaded Greens, tie ball and shuttle threads together. R of 10 ds, twist stem and join to first p between flowers, * 10 ds, cl. Rw, ch of 1 ds, p, 8 ds, p, 1 ds. Rw, r of 10 ds, twist stem, skip p and join to next p of stem, 10 ds, cl. Rw, ch of 1 ds, p, 8 ds, p, 1 ds. Rw, r of 10 ds, twist stem and join to next p. Repeat from * across. Tie and cut.

Now work on opposite side of Heading, attach ball and shuttle threads to center of First Flower * (on wrong side), ch of 10 ds. Rw, r of 10 ds, 2 p's sep by 5 ds, 5 ds, cl. R of 5 ds,

join to last p of preceding r, 5 ds, 2 p's sep by 5 ds, 5 ds, cl. R of 5 ds, join to last p of preceding r, 5 ds, p, 10 ds, cl—cluster made. Rw, ch of 10 ds, join to center p of stem between flowers. Ch of 10 ds. Rw, r of 10 ds, join to p of last r of previous cluster and complete as First Cluster. Rw, ch of 10 ds, join to center of next flower. Repeat from * across, joining to previous cl. Tie and cut.

INSERTION . . . Work as for Edging. Instead of clusters make another Heading as follows: With Shaded Greens, tie ball and shuttle threads together. R of 10 ds, join to center of First Flower, 10 ds, cl. * Rw, ch of 1 ds, p, 8 ds, p, 1 ds. Rw, r of 10 ds, join to center p of stem between flowers, 10 ds, cl. Rw, ch of 1 ds, p, 8 ds, p, 1 ds. Rw, r of 10 ds, join to next flower, 10 ds, cl. Repeat from * across. Tie and cut.

EI-300 Pages 8 and 9**MATERIALS:**

J. & P. Coats Tatting-Crochet, Size 70, 1 ball each of Shaded Purples (No. 18-A), Hunter's Green (No. 48) and Yellow (No. 9).

LARGE FLOWER . . . With Shaded Purples, r of 5 ds, p, 5 ds, make 2 sets of 4 sts—(make 4 sts of first half of ds, then make 4 sts of 2nd half of ds) twice, 5 ds, p, 5 ds, cl. (R of 5 ds, join to last p of preceding r, and complete as first r) 7 times; joining last r to first r. Tie and cut. Attach Yellow to center of flower (between 2 petals), (r of 1 ds, 5 p's sep by 1 ds, 1 ds, cl, join between next 2 petals) 7 times. Tie and cut. Make as many flowers as desired.

STEM AND LEAVES . . . With Hunter's Green, tie ball and shuttle threads together. Fasten in center of First Flower (on wrong side). * Ch of 15 ds. Rw, r of 2 sets of 4 sts (same as for flower), p, 2 sets of 4 sts, cl (leaf made). Rw, ch of 15 ds. (Rw, r of 2 sets of 4 sts, p, 2 sets of 4 sts, cl) twice. Rw, ch of 15 ds. Rw, r of 2 sets of 4 sts, p, 2 sets of 4 sts, cl. Rw, ch of 15 ds. Join to next flower (same as first flower). Repeat from * across. Tie and cut.

SMALL FLOWER . . . With Shaded Purples, r of 5 ds, p, 5 ds, 1 set of 4 sts, join at base of first leaf, 1 set of 4 sts, 5 ds, p, 5 ds, cl. R of 5 ds, join to last p of preceding r, 5 ds, 2 sets of 4 sts, 5 ds, p, 5 ds, cl. R of 5 ds, join to preceding r, 5 ds, 1 set of 4 sts, join to base of 4th leaf, 1 set of 4 sts, 5 ds, p, 5 ds, cl. R of 5 ds, join to preceding r and p of 3rd leaf, 5 ds, 2 sets of 4 sts, 5 ds, join to p of last r, 5 ds, cl. Attach Yellow to center (between r's) and make a r of 1 ds, 5 p's sep by 1 ds, 1 ds, cl. Fasten to opposite side of center. Tie and cut. Make a small flower between large flowers in same manner across.

HEADING . . . With Hunter's Green, tie ball and shuttle threads together. R of 5 ds, join to p between r's of first large flower, * (center it), 5 ds, cl. Rw, ch of 5 ds, 2 p's sep by 5 ds, 5 ds, join to p of first leaf. Ch as before, join to p of 4th leaf. Ch as before. Rw, r of 5 ds, join to next large flower. Repeat from * across. Tie and cut.

INSERTION . . . Work as for Edging. With Hunter's Green, tie ball and shuttle threads together. R of 5 ds, join to p between r's of First Large Flower * (directly opposite of joining of previous heading), 5 ds, cl. Rw, ch of 5 ds, 3 p's sep by 5 ds, 5 ds, join to p of 2nd leaf. Ch of 5 ds, 3 p's sep by 5 ds, 5 ds. Rw, r of 5 ds, join to p between r's of 2nd large flower. Repeat from * across. Tie and cut.

EI-301 Pages 8 and 9**MATERIALS:**

J. & P. Coats Tatting-Crochet, Size 70, 1 ball each of Shaded Blues (No. 13), Shaded Greens (No. 21), Bright Nile Green (No. 26-B) and Yellow (No. 9).

FLOWER (Center) . . . With Yellow, r of 1 ds, 8 p's sep by 1 ds, 1 ds, cl. Tie and cut.

PETALS . . . With Shaded Blues, r of 5 ds, 3 p's sep by 5 ds, 5 ds, cl. Join to first p of center. (R of 5 ds, join to last p of preceding r, 5 ds, 2 p's sep by 5 ds, 5 ds, cl. Join to next p of center) 7 times, joining last r to first r. Tie and cut. Make as many Flowers as desired.

STEMS AND LEAVES . . . Attach Shaded Greens to p between petals. * Ch of 7 ds. Rw, r of 7 ds, join to next p between petals of same flower (preceding last joining), 7 ds, cl. Rw, r of 7 ds, p, 7 ds, cl. Rw, r of 7 ds, join to p between petals of next flower, 7 ds, cl. Reversing curve of chain, ch of 15 ds, join to next p between petals of same Flower (following the last joining). Fasten and carry threads on wrong side of work to opposite side of Flower, skip 3 petals and fasten to p between petals of same Flower. Repeat from * across. Tie and cut.

HEADING . . . Attach Bright Nile Green to p of next-to-last petal preceding the last joining of first Flower. * Ch of 5 ds, 4 p's sep by 5 ds, 5 ds, join to p of petal (following the last joining of next flower). Repeat from * across. Tie and cut.

INSERTION . . . Make exactly the same as for Edging. Attach Bright Nile Green to p of petal of first Flower (directly opposite of joining of previous heading). * Ch of 5 ds, 4 p's sep by 5 ds, 5 ds, join to p of petal of next flower (directly opposite of joining of previous heading). Repeat from * across. Tie and cut.