

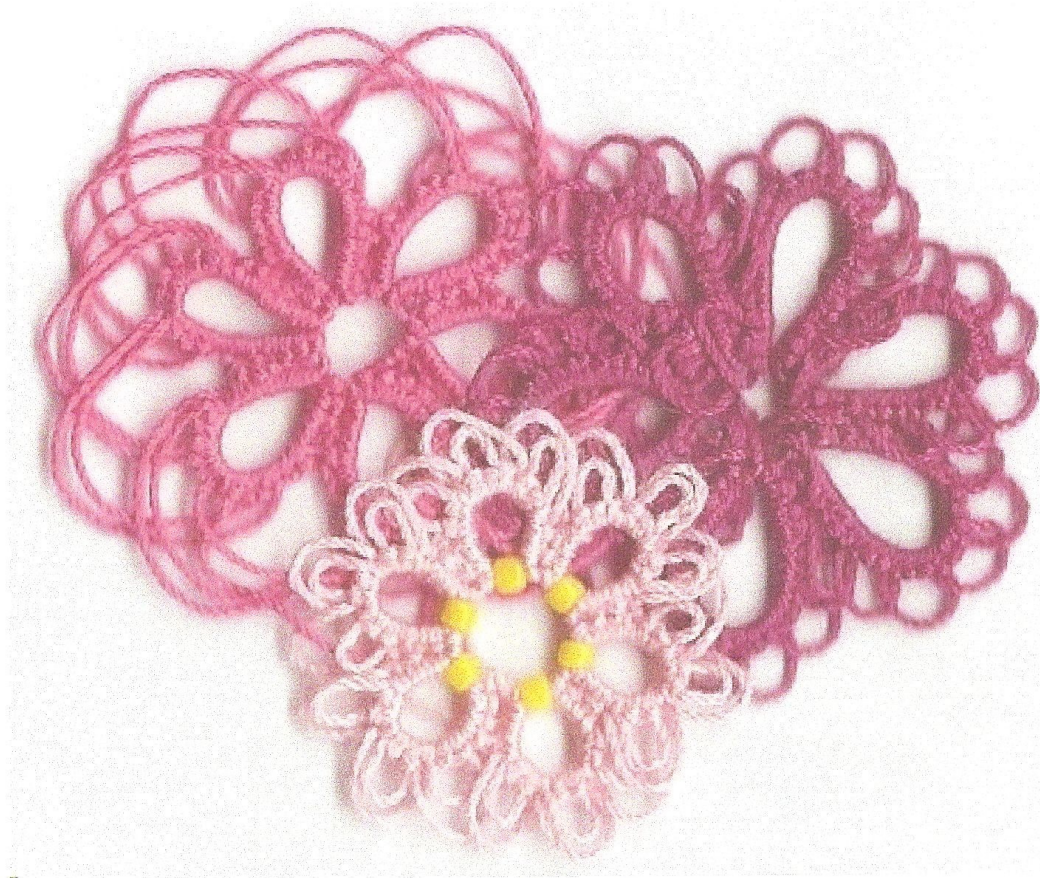


Georgia Seitz Class 4 Ikuta Picots (in memory of Mituko Ikuta)

The thread estimates are for size 20 thread and include more than was actually required for the sample.

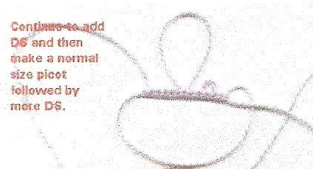
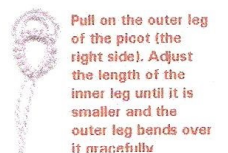
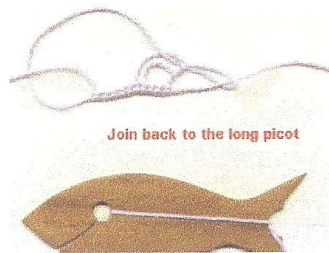
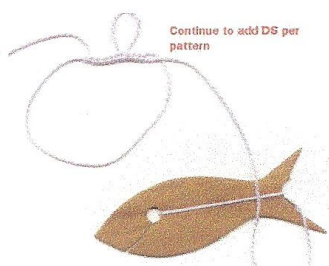
Sample 1 in light pink features double picots. Approx. 6-6½ feet. String 6 size 11 seed beads on shuttle

The picots are ¾" wide, measured open, or 3/8" high if measured closed.



Models by Patti Duff

Place one bead in each ring prior to wrapping the ring.
R 3 – (used for join later) 1 — (long picot) 2 + (join to long picot) 1 --- (long picot) 2 + (join to long picot) 1 — (long picot) 2 + (join to long picot) 1 – (used for join later) 3
clr dnw, leave no space between rings.
Since the bead is in the ring already the ring closes with the bead in the bottom position automatically.



Double and triple picots:

