

THE
RAISED TATTING BOOK,

BY
MLLE. RIEGO DE LA BRANCHARDIERE,

BY APPOINTMENT TO H.M.H THE PRINCESS OF WALES.

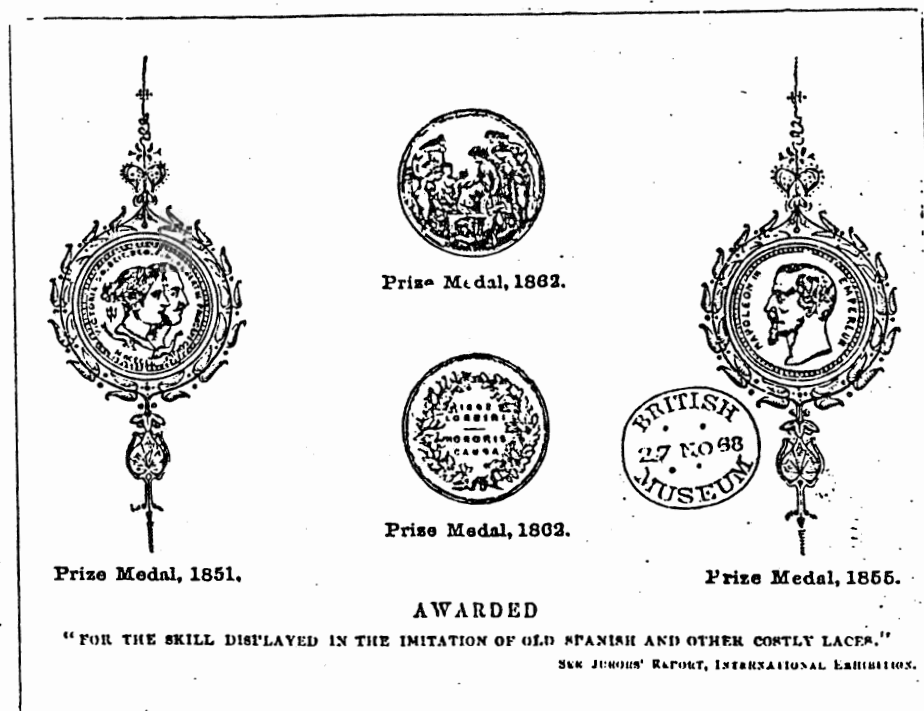
PRICE ONE SHILLING.

LONDON: SIMPKIN, MARSHALL, AND CO.;
AND ALL THE BOOKSELLERS.

1868.

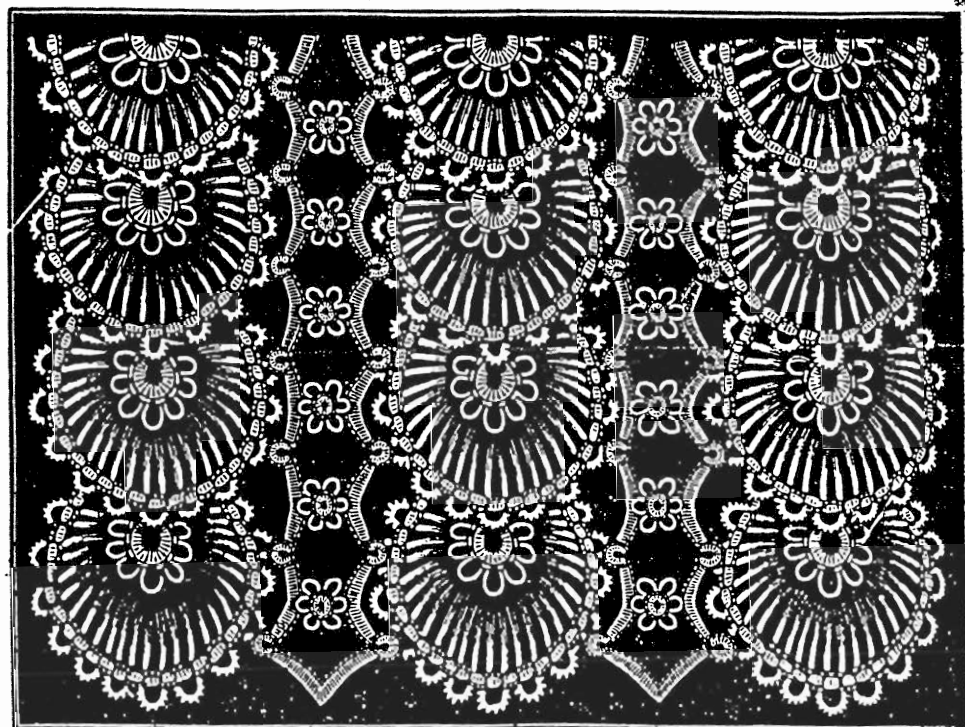
[Entered at Stationers' Hall.]

[The right of Translation is reserved.]



3

SHELL ANTIMACASSAR.



RAISED TATTING BOOK.

SHELL PATTERN ANTIMACASSAR.

Materials—Waller Evans & Co.'s Boar's-head Crochet Cotton No. 000; a flat mesh half an inch in width, Tatting Pin No. 3, and one Red and one White Shuttle.
For Dingleys, Cushions, &c., use Boar's-head Cotton No. 4, or for finer articles Boar's-head Cotton No. 10, and a flat mesh a quarter of an inch in width.

THE SHELLS.

Fill both shuttles and work as directed for the Pearl Beading, page 28, until two small pearls are made on the one side, and one pearl on the other, continue to work in the same manner as follows. Reverse the work.

- Turn the White shuttle thread over the mesh to form a pearl loop, and holding it for a Straight thread, work 2 double stitches as before. Reverse, and holding the Red thread straight, leave a pearl, and work 2 double stitches. Reverse.

Repeat from *, until 12 long pearls are made, all on the one side. Then (leave a pearl, and work 2 double, three times); to correspond with the 3 pearls at the commencement.

6

THE CIRCLE.

It should now measure $4\frac{1}{2}$ inches in length if made with coarse cotton, or $3\frac{1}{2}$ inches if worked in the finer. Knot the White shuttle and Reel together and cut them off. Reverse the work. Commence a loop, work 1 double stitch, then join to the last long pearl, work a single stitch after it, and continue joining and working a stitch, until all the long pearls are attached, then work a double stitch, and draw close; tie in the end of cotton left at the commencement.

THE RAISED CENTRE.—Commence a loop, work 1 double, and using No. 3 pin work (1 pearl and 1 double alternately 12 times); draw close, and fasten off.

Make sufficient of these Shells for the size required, and to attach them together, use a fine needle and thread and sew the Raised Centre over the Circle, then place the centre pearl at the edge of a Shell, over the end of another Shell, and sew two double stitches of them both together. Attach the Shells in lengths for the Stripes.

THE INSERTION.

Fill both shuttles, and knot the ends together.

THE FIRST DOT.—Work with the Red shuttle; commence a loop, work 3 double; take the edge of the first Shell at the end of a Stripe, and join to the third pearl at the right side of it; work 3 double, and draw close. Reverse the work, and holding the other cotton for a Straight thread, work 3 double stitches.

THE ROSETTE.—Work with the White shuttle; commence a loop, and using No. 3 pin, (make a pearl, and work a double stitch, 5 times); draw close.

Take the Red shuttle again, and holding the White for a Straight thread, work 3 double, and reverse the work.

Commence again at the first Dot, joining every second Dot to the next pearl but one of the Shell.

Continue along the Stripes, and when the last Dot is made, work 7 double stitches; then, taking another Stripe, repeat the Insertion; but as the Rosettes are now made, a joining only is required to the centre pearl of them.

RAISED SCALLOP BORDER.

Materials—Walter Evans and Co's. Bear's-head Crochet Cotton, Nos. 14 or 16. Tatting Pin, No. 4. One Red and one White shuttle; this will make a Trimming the same depth as the Engraving. For a coarser size, use Cotton No. 10; but, if coarser still, use a Mesh, No. 9 ball gauge, for the pearl loops.

THIS pattern is worked on the same principle as the Pearl Beading, page 28; and as four threads are required, one Shuttle should be filled off one reel, but not cut off it. The second Shuttle should then be filled off a second reel, and tied in the centre of the first thread, so as to connect the four together. One of the reels should be labelled No. 1, and the other No. 2. Commence by taking the Red shuttle in the right hand, and the knot in the left hand; hold the thread marked No. 2 for a "straight thread," and work a double stitch with it and the Red shuttle; leave this thread at the back, and holding No. 1 for a Straight Thread, work another double stitch with it. Reverse the work, so that these double stitches turn down.

8

* Take the thread from the White shuttle in the left hand, for a Straight Thread, and leaving a pearl, work 2 double stitches with it and the Red shuttle. Reverse the work, turning it towards the worker.

Place the pin as usual, keeping all the threads in the front of it, but No. 2 thread and the White shuttle, when not in use, should turn over the back of the left hand, towards the wrist. Then take No. 1 thread, and keeping it over the pin to form a pearl loop, hold it for a Straight Thread, and work a double stitch with it; leave it at the back.

Bring No. 2 thread in front of the last stitch; and, holding it for a Straight Thread, leave a pearl, and work a double stitch with it. Leave both Reel threads in front of the pin. Reverse, turning it from the worker.

The pearl loops, which are left, should be half the size of those made over the pin.

Repeat from *, until 7 large and small pearls are made on one side, and 7 small pearls on the other. Keep the work on the wrong side.

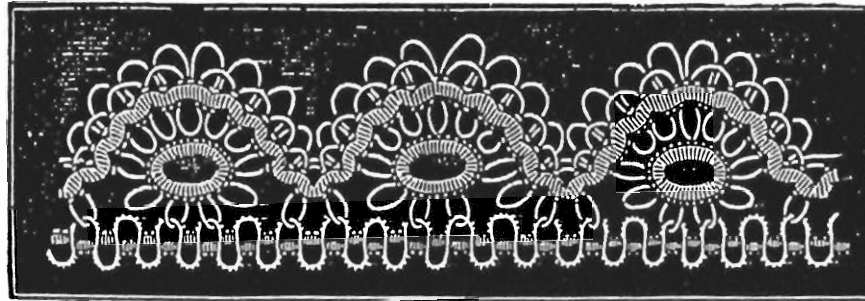
THE CENTRE—Work with the white shuttle; commence a loop, work 5 double stitches; join to the fifth pearl of the seven small ones, then 5 double more; join to the second pearl; 2 double, then (leave a pearl, and work 2 double 4 times); draw close. Take the Red Shuttle again, and, holding the White Straight, work 2 double. Reverse the work.

Take the pin again, and, placing the threads in front as before, keep No. 1 thread over the pin for a pearl, and holding it Straight, work a double stitch as before; then, with No. 2 thread, leave a pearl, and work a double stitch.

Reverse, and with the White thread, leave a pearl, and work 3 double stitches.

Reverse, and with No. 2 thread, work a double stitch, without any pearl between, so that it is

close to the previous stitches, leave this thread in front, and, with No. 1 thread, work another double stitch. Reverse, and commence again at *, at the beginning of the direction. **THE BEADING**, which can be continued with the same threads as the edging; but one of the reels can be fastened off, as only three threads are now required. Hold the White shuttle for a Straight Thread, and work 2 double stitches. Reverse. Hold the Reel thread straight, and leaving a pearl, work 2 double. Reverse.



Take the White shuttle, and make a joining to the last pearl of the edge; take the Red shuttle again, and holding the White straight, work 2 double. Reverse, and then 2 double with the Reel; then 2 double with the White shuttle, and 2 double with the Reel, always leaving a pearl; then join with the White shuttle to the second pearl of the centre, and continue the Beading in the same manner to the end.

ETOILE INSERTION.

Materials—Walter Evans & Co's. Boar's-head Crochet Cotton, No. 12, 14, or 16, one Red and White Shuttle. Tatting Pin, No. 4.

For a coarser size, use Cotton No. 4 or 8, and a Mesh No. 9, Bell gauge.

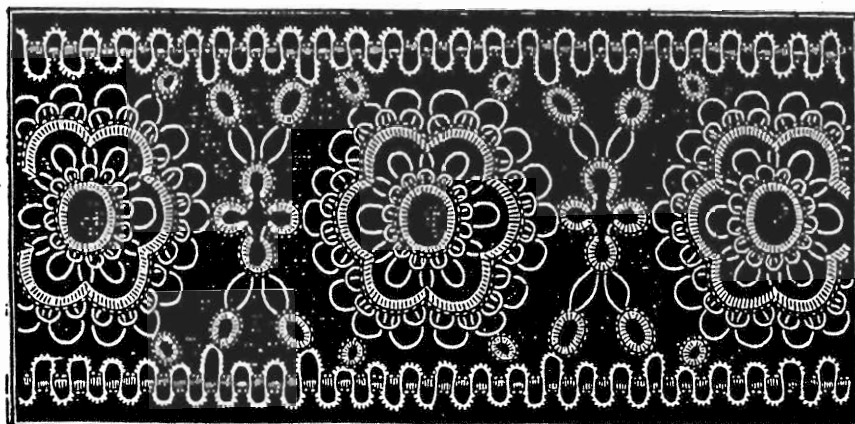
THE RAISED STAR.

THE CENTRE.—Fill one Shuttle, but do not cut off the Reel; and commencing a loop, work a double stitch, take the Pin and place it as usual. When not in use, the Reel thread should be in front, but letting the Reel fall over the pin, to the back of the left hand.

* Turn the foundation loop over the Pin to make a pearl, and work a double stitch as usual. Withdraw the fingers from the foundation loop, bring the Reel thread to the right, in front of the Pin, and holding it for a Straight Thread, leave a pearl, and work a double stitch with it; leave thread to the left, and place the fingers in the foundation loop again. Repeat from until 11 long and small pearls are made; the pearls that are left should be half the size of those made over the Pin.

When these pearls are made, pass the shuttle through the foundation loop to the back; withdraw the Pin, and draw the loop close, tie the two threads together to secure them, and then knot them together so as to form a 12th long pearl, keeping the knot in the centre. Now take an Extra thread and tie it to the shuttle thread close to the knot.

THE DIVISIONS.—Hold the thread from the Reel for a Straight thread and work a double Stitch with it and the shuttle. Leave this thread in front, and holding the Extra thread



straight, work a double Stitch, leave it at the back; bring the Reel thread forward, and holding it straight, leave a pearl and work a double Stitch.

* * Take the Pin, keeping the Reel Thread in front, and over the left hand, as before. Turn the Extra thread over the Pin, to make a pearl, and holding it straight, work a double stitch; then hold the Reel Thread straight, and leaving a pearl, work a double stitch.

Repeat from * *, until 4 small and 8 long pearls are made, then join the Shuttle Thread to the next long pearl but one of the centre.

Commence again at the beginning of the Division, and repeat until six are made, then to fasten off, knot the end left and the extra thread together, and then the other two ends, cutting them off. Repeat this Star.

THE SMALL DIAMONDS.

THE FIRST OVAL.—Fill a Shuttle, and commencing a loop, work 4 double stitches; make a pearl loop over the Pin, then 1 double; make another pearl, and work 4 double; draw close.

SECOND OVAL.—Commence a loop close to the last, work 4 double. Take a Star, and join to the centre long pearl of one of the Divisions of it; then 4 double, and draw close.

THIRD OVAL.—Work as the 1st Oval.

FOURTH OVAL.—Work as the 2nd Oval, joining it to another Star; then to fasten off; pass the first end of cotton through the centre of the last Oval, and knot the two ends together. Repeat this Diamond, until the Stars are attached.

THE BEADING.

Commence as directed for the Pearl Beading, page 28, and continue the same until 5 pearls are made, always counting both sides; when they are finished, reverse the work.

THE FIRST DOT—Work with the White Shuttle, and commencing a loop close to the beading, work 2 double stitches. Take the first Star, and join to the sixth pearl loop of it, counting towards the left from the Diamond, then 2 double, and draw close. Take the Red Shuttle again, and holding the White for a Straight Thread, work 2 double as usual, and to continue the Beading. Reverse, and leaving a pearl, work 2 double with the two Threads alternately, until nine pearls are made, then reverse.

SECOND DOT.—Work as the First Dot, joining to the third pearl loop of the same Star; work the 2 double after it, then reverse, and leave a pearl and work 2 double with the Red Thread as usual.

THIRD DOT.—Work with the White Shuttle, and commence a loop nearly a quarter of an inch from the Beading. Work 4 double; join to the nearest long pearl of the Diamond; then 4 double, and draw close.

Take the Red Shuttle, and holding the White Straight, work 2 double, leaving a space of thread to correspond with that left before, and to continue the Beading.

Reverse the work, leave a pearl, and work 2 double, until five pearls are made, then reverse.

FOURTH DOT.—Work as the 3rd Dot, and make the 2 double after it. Reverse, and with the Reel, leave a pearl and work 2 double.

Commence again at the first Dot, and continue along one side, then work the other side the same.

MICNARDISE EDGING.

Materials.—Walter Evans and Co's Boar's-head Crochet Cotton, No. 14, will make an Edging three-quarters of an inch in depth, using Tatting Pin No. 2.

For a finer size, use Boar's head Cotton, No 18, or coarser, No. 10. Two Shuttles are required; one White, the other Red.

THE EDGE.

Fill both shuttles and commence as directed for the Pearl Beading, Page 28, making the 2 double stitches three times; then reverse the work.

* Take the tatting pin, and turning the cotton attached to the Reel twice round it to form an extra pearl loop, hold it for a Straight Thread, and work 2 double stitches; withdraw the pin.

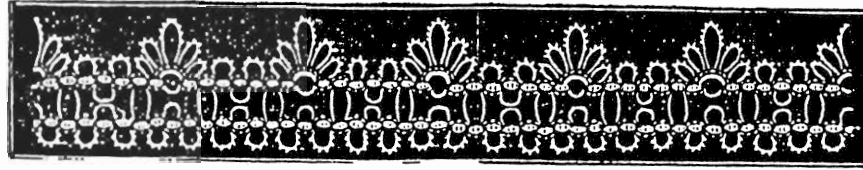
Reverse the work, take the pin and turning the White Shuttle cotton over it to form a pearl loop, hold it for a Straight Thread and work a double stitch; make another pearl, and keeping the thread loosely over the pin, work a second double stitch. Turn the cotton twice round the pin and work a third double stitch, this will form three pearl loops, each a little longer than the preceding one. Turn the cotton loosely over the pin to correspond with the last pearl but one, and work a fourth double stitch.

Reverse, and holding the Reel thread straight, work 2 double stitches.

Reverse, and turning the White shuttle thread over the pin to form a pearl, work 2 double stitches.

Reverse, and turning the Reel thread twice round the pin, work 2 double stitches.

Reverse, and holding the White shuttle thread straight, leave a pearl and work 2 double stitches.
 Reverse, and holding the Reel thread straight, leave a pearl and work 2 double stitches.
 Reverse, and holding the White thread straight, leave a pearl and work 2 double stitches, then reverse and commence again at * until the length is made.
 It is advisable, now and then, to make a stitch that will secure the foundation thread.
 —See Rules.



The BEADING is made the same as the Pearl Beading, page 28, and, to prevent unnecessary joins, the edge should be left off just before the second extra pearl is made, and instead, the three threads must be knotted together, keeping the knot the same distance from the edge as the extra pearl loops.

* Reverse the work, and holding the Reel for a Straight Thread, leave a pearl, and work 2 double. Reverse, and holding the White shuttle thread straight, leave a pearl and work 2 double. Reverse, hold the Reel straight, and leaving a pearl work 2 double. Reverse, take the White shuttle in the right hand, and make a joining with it to the next extra pearl of the Edge. Take the Red shuttle again, and holding the White straight, work 2 double. Repeat from * to the end.

MALTESE SQUARE.

FOR A CUSHION, CAP, OR DOYLEY.

Materials—Walter Evans and Co.'s Boar's-head Crochet Cotton, Nos. 12 or 14; one Red and one White Shuttle. Tatting Pins, Nos. 2 and 4. This will make a Square of 7½ inches. For a larger Square, use Boar's-head Cotton, Nos. 1 or 6. For the pearl loops, use No. 3 Tatting Pin instead of No. 2; and all the pearl loops formed with No. 4 Pin should be made rather loosely.

THE OCTAGON STAR.

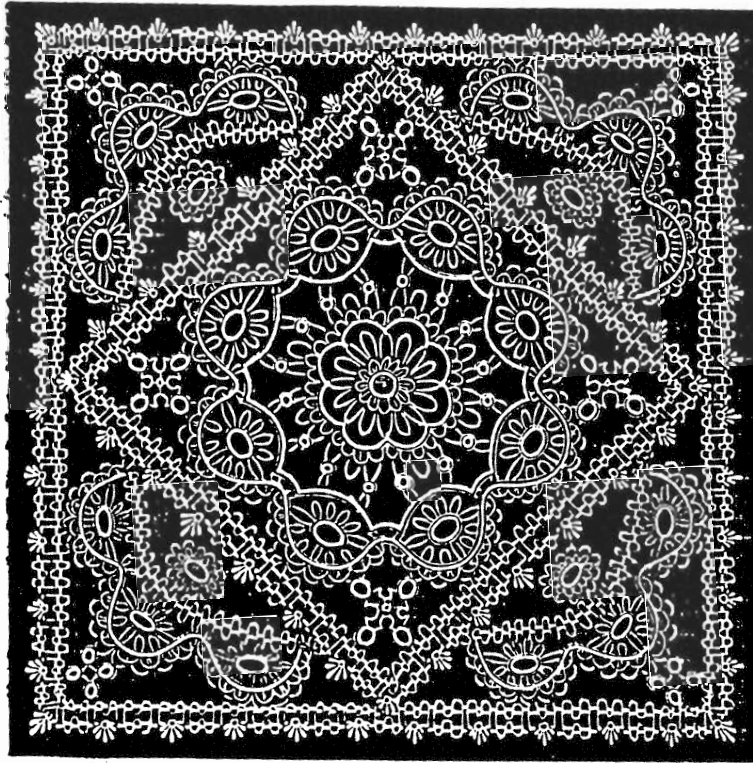
Work the Raised Star as directed at page 10, but making 15 long pearls instead of 11, so that the knot may form the 16th pearl; this will allow for the eight Divisions, of which the Star is composed.

For the Pattern round the Centre Star, work eight Scallops of the Raised Border, page 7; then, instead of working the Beading, knot the two reel threads together, and cut them off; the Red and White Shuttles only being required to make the Dots, which attach these scallops to the Centre Star.

THE JOINING.—Hold the White Shuttle straight, and work 7 double stitches; then join the Red Shuttle to the last pearl nearest the Centre of the Scallop. Hold the White Shuttle straight, and work 6 double more.

FIRST DOT.—Use the White Shuttle, and, commencing a loop the eighth of an inch from the last stitch, work 3 double. Take the Centre Star, and join to the last long pearl of it; then work 3 double, and draw close.

MILITARY SQUARE.



Take the Red Shuttle again, and holding the White straight, 'cave an eighth of thread, and work 7 double stitches.

SECOND DOT.—Work as the first Dot, joining to the next pearl but one of the Star.

Take the Red Shuttle, and work 6 double as before; then join it to the pearl after the Centre of the Scallop. Repeat from the beginning of the joining, until all are attached; then join the first stitch to the last, and fasten off.

THE SQUARE.

Make 28 patterns of the Mignardise Edging, page 14, working the Beading the same, except that to form the Angles of the Square; after knotting the three threads together, join with the White shuttle to the last extra pearl, then hold it straight, and work 2 double, and commencing at *, work the Beading, until 26 pearls are made on the outside; then, for the Angle, join the two next extra pearls together as one loop. Continue making 26 pearls, and then the Angle, until the four sides are formed, leaving the threads until it is made round. To attach this Square to the Centre, make a knotted joining at the tenth pearl of the Beading, and the fourth long pearl of one of the Scallops.

Make another joining, with the seventh pearl of the Beading, *always* counting from the last joining, and the fifth pearl of the next Scallop.

THE JOINING DIAMONDS.

THE CENTRE.—Fill the Shuttle, and commencing a loop, work 2 double; take No. 2 pin, (make a pearl, and work 2 double three times); draw close, and knot the two threads together, to form a 4th pearl loop.

FIRST DOT.—Commence a loop, work 5 double; take the Scallops on the wrong side, and join to the sixth pearl of the next Scallop, which will be the seventh pearl from the one attached to the Beading; work 5 double, and draw close. Join to the next pearl of the Centre.

SECOND DOT—Work as the First Dot, and missing 5 pearls of the Scallops, join to the next but one to that attached to the Beading.

Work two Dots more, joining the third Dot to the sixth pearl of the Beading, and the fourth Dot to the seventh pearl of the Beading; fasten off.

Repeat the Knotting and Diamond along each side, then fasten off the Beading.

THE CORNERS.

Make three Scallops of the Raised Border, page 7, working the Beading; and before fastening off the foundation thread, it should be drawn a little, so that the pattern may curve slightly.

JOINING STAR—THE OVAL—Fill the Shuttle, leaving the Reel. Commence a loop; work 6 double; join to the Centre loop of the fourth Pattern of the Mignardise Edging, then 6 double, and draw close. Reverse; and holding the Reel straight, work 3 double stitches.

Work a second Oval the same, joining it to the next Pattern of the Edge, then 3 double as before.

Work a third Oval, joining it to the pearl of the Beading, which is between the first and second Scallops of the three last worked. 3 double.

Work a fourth Oval, joining it to the pearl between the second and third Scallops, then 3 double; join to the first stitch, and fasten off.

Work a Raised Star of 12 long pearls, and sew it over the double stitches between the Ovals.

Sew the ends of the Scallops to the Mignardise Edge, and work all the Corners the same.

SMALL DIAMOND.—First Dot—Commence a loop, work 4 double, join to the sixth pearl of the Centre Scallop; 4 double, draw close.

Work the second Dot the same, joining it to the next pearl.

The third Dot—Commence, work 4 double; 1 pearl, 4 double; draw close. Work the fourth Dot the same, and fasten off.

THE BORDER.—Make 44 Patterns of the Mignardise Edging. Then commence the Beading, by making the Angle as in the Square, and continue until the 3rd pearl is required on the outside; then, instead, join with the Reel to the 3rd Dot of the Small Diamond. Continue the Beading, until 5 pearls are made, joining the 6th pearl to the 5th long pearl of the Scallop. Work 3 pearls, joining the 4th to the third pearl of the Scallop. Work 8 pearls, but only work one double stitch after the last pearl, and join to the centre loop of the Edging which forms the Angle; then one double.

Continue the Beading for 8 pearls; join to the next Scallop, and repeat the joining to correspond.

At the Corners, two extra pearls of this Edging are to be joined together, as in the Square.

To increase the size, the Raised Border may now be added.

SHELL EDGING

Materials—Waller Evans and Co.'s Boar's-head Crochet Cotton, No. 16 or 18. One Red and one White Shuttle; and for the pearl loops, a flat Mesh, a quarter of an inch wide.

For a coarser size, use Boar's-head Cotton, Nos. 12 or 8, and a Mesh three-eighths of an inch in width.

Fill both Shuttles, and commence as directed for the Pearl Beading, page 28; when a small pearl will be formed on each side.



* Then reverse the work; take the Mesh, and turning the Reel thread over it, to form a pearl, hold it for a Straight Thread, and work 2 double stitches as before.

Reverse the work; hold the White Shuttle Thread straight, and leaving a pearl, work 2 double stitches.

Repeat from *, until 6 long pearls are made; then after the last 2 double stitches, work double more, to make 4 in all; reverse the work, and holding the White Shuttle thread straight, work 2 double, keeping them close to the last, so as not to leave any pearl between. Commence again at *, and continue until the length is made; then, to form the heading, fasten off the white shuttle, as only two threads are required.

THE HEADING.—Hold the Reel Thread straight, and work 6 double stitches; leave this thread.

THE OVAL.—Commence a loop, and work 1 double stitch, then make a joining as usual, to the next long pearl, and work a single stitch. Continue joining to another pearl, and working a single stitch after, until the 6 pearls are attached, then draw the loop close.

Reverse the work, and holding the Reel Thread straight, work 12 double stitches; then reverse, and commence again at the Oval.

CHILD'S DRESS

Materials—Waller Evans and Co.'s Boar's-head Crochet Cotton, No. 14 or 16. One Red and one White Shuttle. Tatting Pin No. 4 for the pearl loops.

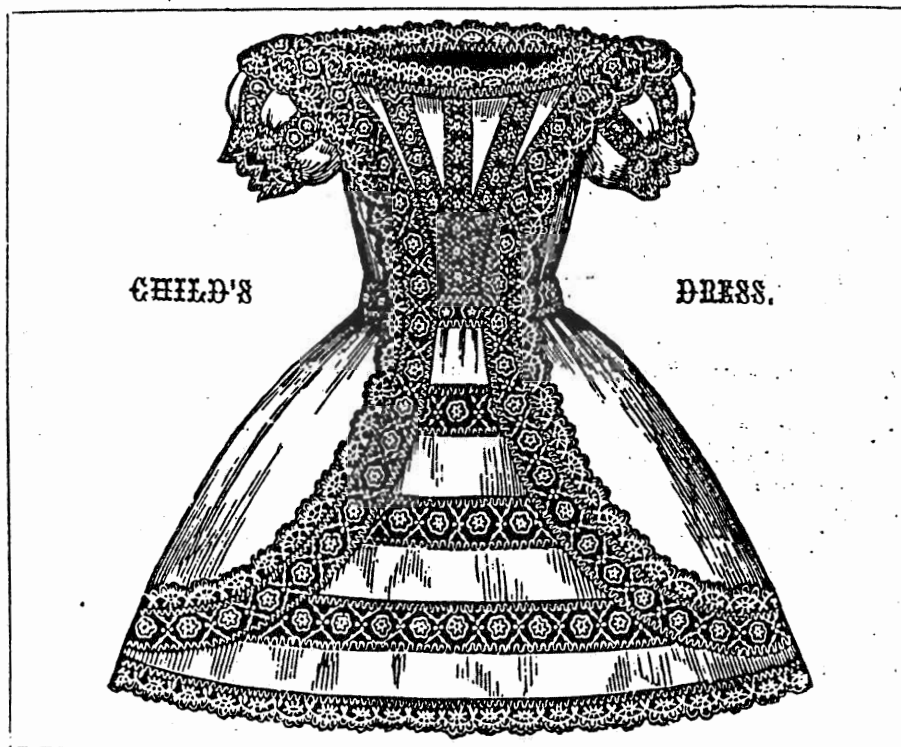
The Engraving represents a Child's Cambrie Dress, ornamented with Tatting, which is so arranged, that colored ribbon may be placed under the Bands of Insertion. The Dress should therefore be made complete; then the work lined and attached to it afterwards.

For the front, the Etoile Insertion, page 10, is worked in graduated Bands.

The Insertion is also to be made of sufficient length to go all round the Skirt, up the sides of the front, and across the shoulders, ending at the back.

The Raised Scallop Border is used to edge the Insertion, which forms the Robing; but it should terminate at the sides with a rosette of ribbon; it is also made to edge the Skirt, Neck, and Sleeves.

For the Stomacher, three Bands of the Daisy Insertion will be required; and the same Pattern is to be used for the Sleeves and Waistband.



DAISY INSERTION

Materials--Walter Ewins and Co.'s Rose-head Crochet Cotton, Nos. 14 or 16, and Tilling Pin, No. 4, will make a fine Insertion, of one inch in width; for a coarser size, use Cotton Nos. 8 or 10. One Red and one White Shuttle are required.

For Antimacassars, Cotton Nos. 2 or 0 should be used with a Mesh, No. 9, bell gauge for the pearl loops.

This Pattern is designed for a running of Ribbon, and is especially suited for Neckties, Small Lappets, or Dress Trimmings.

THE DAISIES.

Commence by working the Centre of the Raised Star, page 10, and make 12 long loops; then pass the shuttle to the wrong side, and knotting the two threads together, fasten off.

Make as many of these Stars as will be required for the length, and then attach them together. Work as directed for the Pearl Heading, page 28, when a pearl will be made on each side; then hold the Reel thread straight, and leaving a pearl, work 2 double, as before.

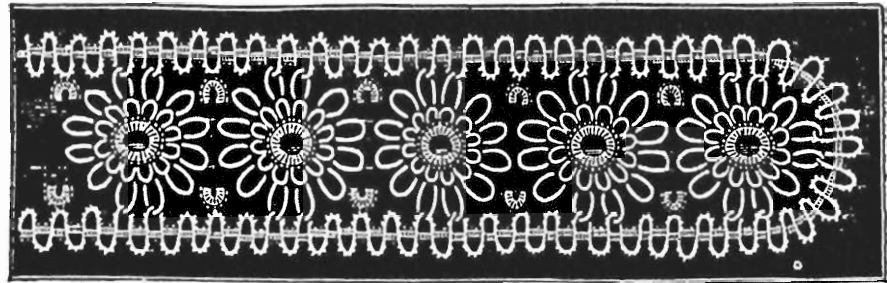
THE DOZ.—Reverse the work. Take the White Shuttle in the right hand, and commencing a loop, work 3 double stitches; make an extra pearl, by turning the Cotton twice round the Pin; work 3 double, and draw close.

Take the Red Shuttle again, and holding the White straight, work 2 double stitch e.

Reverse; and, holding the Reel straight, leave a pearl, and work 2 double stitches.

Reverse; hold the White straight, and leaving a pearl, work 2 double stitches.

Reverse; hold the Reel straight, and leaving a pearl, work 2 double; in all, three pearls.
 Reverse. Take a Star, and join, with the White Shuttle, to one of the long pearls of it.
 Take the Red Shuttle, and holding the White straight, work 2 double stitches.
 Reverse; hold the Reel straight, and leaving a pearl, work 2 double stitches.



Reverse, and make another joining, as before, to the next long pearl of the Star; work the 2 double stitches after it. Then make three pearls with the two threads, as before, and commence again at the Dot.

The Second side is worked the same, joining to the opposite pearls of the Stars; and in working the Dot, a joining is to be made to the extra pearl of the opposite Dot.

To form the End, seven pearls of the Beading should be worked, and then joined to the loops at the side of the Star.

SASH OR LAPPET.

Materials—Waller Evans & Co.'s Boar's-head Crochet Cotton No. 14, one Red and one White shuttle. Tatting Pin No. 4 for the pearl loops.

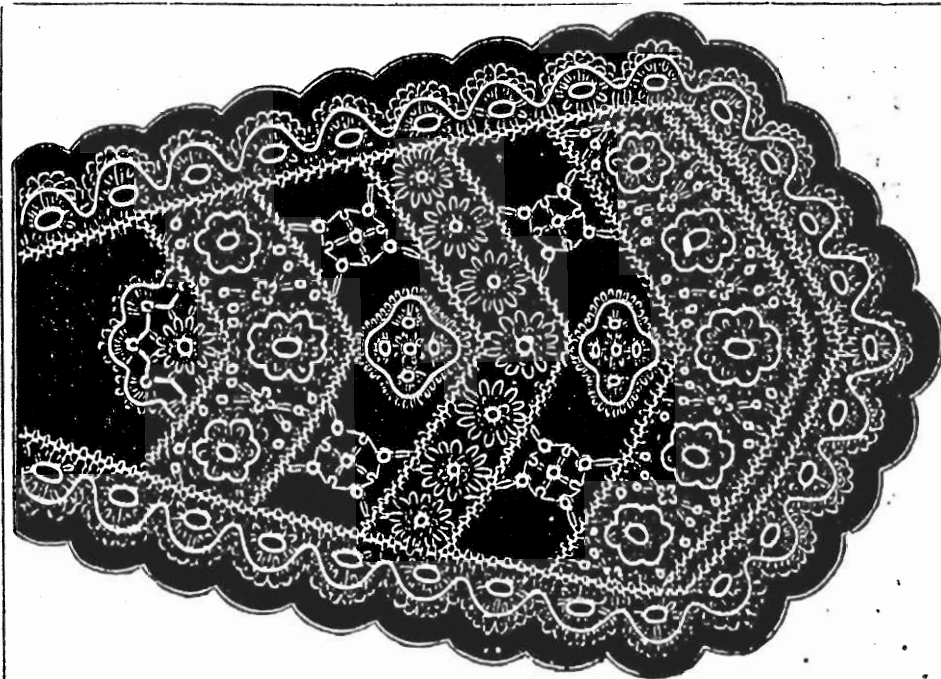
The engraving represents one end of a sash, eight inches across at the widest part. The Tatting consists of graduated Bands of the Etoile and Daisy Insertions, placed on the material of which the sash is formed, the whole being edged with the Raised Border. Should the pattern be worked for a lappet, the narrow stripes only will be required.

THE ETOILE BANDS.

Commence by working four Raised Stars, as directed at page 10, then to form the Octagon Star for the Centre, repeat the Star as before, making 15 long loops instead of 11, so that the knot forms the 16th loop; this will allow for the eight Divisions, of which the Star consists. These Stars are to be attached with the small Diamonds, page 12, except that in joining the Octagon Star, only one division is to be left between the upper part of it and the Diamonds, which will leave five unattached at the lower part.

THE BEADING.—Work as directed at page 12, repeating until two Divisions of the Octagon Star are joined, then work 7 pearls of the Beading, and a small Dot joined to the next Division of the Star; then 7 pearls again, and a Dot attached to the last Division of the Star; work the other half of the Beading to correspond.

In working the beading for the opposite side, after the 2nd Diamond is attached, a Dot only is required, to join the Beading to the Centre Division of the Octagon Star.



The upper Band is worked the same, but will only require the Octagon Star with a smaller one at each side.

For the Centre Band, work the Daisy Insertion.

The Diamonds in the Centre are composed of four patterns of the Raised Scallop Border, with a Raised Star in the centre; and for the Small Crosses on each side, work as directed for the joining Diamonds, page 18, but making a pearl instead of joining them.

The half Circle above the third Band consists of five patterns of the Shell Edging, with a Raised Star in the Centre.

NOTICE.

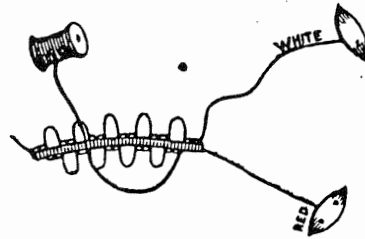
THE PEARL BEADING.

It having been found that Patterns, in which these pearl loops are introduced, *were* much better than those made by the usual method, care has been taken to preserve the same principle throughout the Designs in this little Book.

To form this Pattern, three threads are required. Fill one of the Shuttles, and cut the thread off the Reel; then fill the other Shuttle, but instead of cutting it off, tie the thread of the first Shuttle between the second Shuttle and the Reel.

Commence by holding the knot in the left hand, and the Red Shuttle in the right hand; leave the thread from the Reel to fall over the back of the left hand, take the thread from the

White Shuttle, and hold it between the 3rd and 4th fingers for a "Straight Thread," then work with it and the Shuttle 2 double stitches; leave this straight thread * Reverse the work, turning it from the worker, and keep it so that the double stitches turn down; take the Reel thread, and holding it for a "Straight Thread," work with it and the Shuttle 2 double stitches; a space of thread should always be left, which is termed "Leaving a Pearl;"

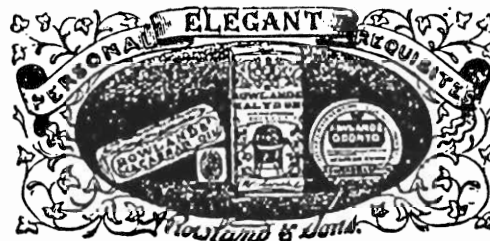


leave this thread. Reverse the work, turning it towards the worker; take the straight thread of the White shuttle, leave a pearl, and work 2 double stitches. This forms the commencement of several Patterns; but if the Beading is to be continued, repeat from *, forming the 2 double stitches with the White Shuttle and the Reel thread alternately, until the length is made.

In working a long length of this Beading, it is advisable, about every few inches, to make a stitch which will fasten the foundation thread; this can be done in working the last stitch of the 2 double, by allowing the Straight Thread to form the stitch.

These double stitches are formed by a reverse stitch, and then a single stitch.

The New Steel Tatting Pins or Hooks, Manufactured by H. Walker, will be found an improvement on the ordinary make, and in working these designs, care must be taken to procure the correct sizes; No. 1 being the finest, No. 2 and 3 the medium, and No. 4, which is also made of ivory, the largest.



PERSONAL BEAUTY.

The hair, the teeth, and the complexion, are the three essential points of a handsome personal appearance, and their preservation is of primary importance to all. The toilet requisites, prepared by Messrs. Rowlands and Sons, not only preserve but enhance the attraction of those irresistible charms of youth and beauty. The "Macassar" strengthens and improves the hair; the "Odonto" preserves and beautifies the teeth; and the "Kalydor" imparts brilliancy and clearness to the complexion. The merits of these preparations are too well known to require any eulogy from us as to their special excellence. No lady's toilet should be without Messrs. Rowlands' invaluable specifics.—*Le Follet.*

ROWLANDS' MACASSAR OIL

Is a Delightful, Fragrant, and Transparent Preparation for the Hair.

And, as an invigorator and beautifier, beyond all precedent. It bestows a permanent gloss, with a silky softness, and a strong tendency to curl, and is the ONLY KNOWN SPECIFIC capable of effectually sustaining the Hair in decorative charm during the exercise of dancing or the relaxing effects of crowded rooms. Prices, 3s. 6d.; 7s.; 10s. 6d.; equal to four small, and double that size, 21s. per bottle.

ROWLANDS' KALYDOR,

FOR THE SKIN AND COMPLEXION.

A balmy, perfumous, creamy Liquid, as equally celebrated for safety in application as UNEQUALLED FOR ITS RARE AND INESTIMABLE QUALITIES. The radiant bloom it imparts to the cheek, the softness and delicacy which it induces on the hands and arms, its capability of soothing irritation, and removing cutaneous defects, discolorations, and all unsightly appearances render it

INDISPENSABLE TO EVERY TOILET.

Price 4s. 6d. and 8s. 6d. per bottle.

ROWLANDS' ODONTO,

OR PEARL DENTIFRICE.

A White Powder, compounded of the choicest and most recherché ingredients of the Oriental Herb 1, and of inestimable value in

PRESERVING AND IMPARTING

A PEARL-LIKE WHITENESS TO THE TEETH: STRENGTHENING THE GUMS; AND IN GIVING A PLEASING FRAGRANCE TO THE BREATH. Price 2s. 6d. per box.

Sold at 20, Hatton Garden, London, and by Chemists and Perfumers. Ask for "ROWLANDS' articles"

WALTER EVANS & CO., BOAR'S-HEAD COTTON MANUFACTORY, DERBY,

MANUFACTURE THE FOLLOWING:—

SUPERIOR SIX CORD CROCHET COTTON, on Spools and in Skeins, for Sewing,
Knitting, and Crochet Work.
SUPERIOR SIX CORD SEWINGS, on Spools, soft finish, for Sewing Machines, &c.
TATTING COTTON, on Spools.
PATENT GLACE THREAD, in White, Black, and Colors, on Spools and Cards.
TWO and THREE CORD SEWINGS, on Spools, soft finish.
SEWINGS, in Balls.
EMBROIDERING, KNITTING, MENDING, COTTON CORDS, and SMALL CORDS.

1862.



London Exhibition Prize Medal, Awarded
"for very strong & most superior Thread."

1867.



Paris Universal Exhibition Gold
Medal.

31



BY APPOINTMENT
TO H.R.M.
THE PRINCESS OF WALES.

Needlework Establishment,

2, OLD QUEBEC STREET, W.,

Near the Marble Arch.

M^{RS}. RINGO DE LA BRANCHARDIERE having reason to believe that there has been a recent infringement and use of her name, she must caution ladies against purchasing any of her registered or copyright Designs unless they are signed with her name in full, as she is informed by law it is against the purchaser as well as the person infringing that she must proceed, in case it is necessary, to assert her rights.

The ONLY Establishment authorised by M^{RS}. RINGO to use her name for the sale of her Various Works, is at the above address.

27 NO. 68

THE INSTRUCTION TATTING BOOK	1 0	THE USEFUL KNITTING BOOK	1 0
THE EXHIBITION TATTING BOOK	1 0	THE 6TH SERIES CROCHET BOOK	1 0
THE ROYAL TATTING BOOK	1 0	WINTER BOOK FOR 1862	1 0
THE LACE TATTING BOOK	1 0	"MELANGE DE LAINE"	1 0
THE ETOILE TATTING BOOK	1 0	"TRICOT ECOSSAIS"	1 0
THE PEARL TATTING BOOK	1 0	ANDALUSIAN KNITTING & NETTING	1 0
THE RAISED TATTING BOOK	1 0	COLORURED ANTIMACASSARS	1 0
THE SIMPLE TATTING BOOK	0 6	LA MODE WINTER	0 6
TATTING EDGINGS	0 6	THE BOOK OF SIBERIAN WOOL	0 6
THE 18TH SERIES CROCHET BOOK	1 0	THE CHILD'S WINTER KNITTING	0 6
THE 10TH AND 17TH SERIES	1 0	THE ABERGELDIE WINTER BOOK	1 0
THE GUIPURE D'ART NETTING BOOK . . . PRICE 1s.			

6



PERSONAL BEAUTY

At all times awakens the liveliest and most delightful feelings of our nature, and the willing homage it receives in the splendid assemblages of Royalty and Rank, or amidst the no less fascinating displays of our Social Re-unions, demands that the nicest and most careful attention should be paid to the cultivation of an object so manifestly important. These cursory remarks are peculiarly applicable to the universally acknowledged virtues of

ROWLANDS' TOILET REQUISITES

ROWLANDS' MACASSAR OIL,
IS A DELIGHTFULLY FRAGRANT AND TRANSPARENT PREPARATION FOR THE HAIR.
 And, as an invigorator and beautifier, beyond all precedent. It bestows a permanent gloss, with a silky softness, and a strong tendency to curl, and is the ONLY KNOWN SPECIFIC capable of effectually sustaining the Hair in decorative charin during the exercise of dancing, or the relaxing effects of crowded rooms. Prices 3s. 6d.; 7s. 10s. 6d.; equal to four small, and double that size, 21s. per bottle.

ROWLANDS' KALYDOR,

FOR THE SKIN AND COMPLEXION.

A balmy, odoriferous, creamy Liquid, as equally celebrated for safety in application as
UNEQUALLED FOR ITS RARE AND INESTIMABLE QUALITIES.
 The radiant bloom it imparts to the cheek, the softness and delicacy which it induces of the hands and arms, its capability of soothing irritation, and removing cutaneous defects, discolourations, and all unsightly appearances render it

INDISPENSABLE TO EVERY TOILET.

Price 4s. 6d. and 8s. 6d. per bottle.

ROWLANDS' ODONTO,

OR PEARL DENTIFRICE.

A White Powder, compounded of the choicest and most *recherché* ingredients of the Oriental Herbal, and of inestimable value in

PRESERVING AND IMPARTING

A PEARL-LIKE WHITENESS TO THE TEETH;
STRENGTHENING THE GUMS; AND IN GIVING A PLEASING FRAGRANCE TO THE BREATH.

Price 2s. 9d. per box.

Sold at 20, Hatton Garden, London, and by Chemists and Perfumers.
 Ask for "ROWLANDS'" articles.

